

THE INTERIOR ANGLE

Annual Conference
Information Page 20

KAPS 2012, WINTER ISSUE

KENTUCKY ASSOCIATION OF PROFESSIONAL SURVEYORS
JANUARY 2012 – ISSUE 1

Photo By Colleen Comer

Don Pedigo, PLS

Kentucky Association of Professional Surveyors
124 Walnut Street • Frankfort, Kentucky 40601

FROM THE PRESIDENT'S DESK

I look forward to this time of the year, the holidays and spending time with my family and friends; of course a little golf mixed in doesn't hurt either. I am enjoying my term as President, in my travels to KAPS appointments and chapter meetings.

As I stated in my November *Interior Angle* article, based on comments from KAPS members and non-members, I am convinced that KAPS is moving in a positive direction. The goal is to maintain the momentum! Changes within KAPS have been some initiated this year and I/we will strive to make all of the changes positive ones. I work to make progressive changes that will benefit the membership and the surveying profession in its future endeavors. With your help, this goal is being achieved and realized and one we will continue to pursue. Part of the pleasure of being President is meeting the KAPS membership and visiting with the various Chapters around the Commonwealth. **If you have a particular meeting or function you would like me to attend, please let me know as soon as possible so I can get it on my schedule.** We depend on the Chapter Chairs to help keep the membership informed of what is going on at the State level and with the workings of the KAPS Board. Please keep up the good work.

SAFETY!

I received the following from Chris Gephart, a friend and business acquaintance of his was killed recently. He was not a surveyor but I feel strongly that the situation and Chris's message should be conveyed to all surveyors and those of us that work in or around traffic on a regular basis.

From Chris November 22, 2011: Batavia Township Trustee Elect Jim Bushman was killed roadside yesterday by a pickup truck/van accident while taking out his garbage cans at his home south of Batavia. I was fortunate to know this man well. He was a good man and one of the



co-owners of the building our business is located. I talked to Jim yesterday morning over a matter here at the office. Little would I know that would be our final conversation.

Jim had the bad luck and misfortune of being in the wrong place at the right time. Wet conditions, a speeding truck, and the next thing, he's gone. As surveyors, we all spend a significant amount of time near, or in, public roadways where our exposure to potential grave danger is high. These are conditions we all are acutely aware of and we try not to dwell on those thoughts too long and hard, just be sure we are doing our best to minimize those risks.

We all breathe a little easier when all of our operations have moved away from a busy highway, and our crews are far away from the road. For many of us old-timers, we have watched traffic volume increase geometrically in our careers. Most of us can remember times

out in the country, where we actually occupied intersections and measured down the center of the road, and rarely saw a vehicle. Those days are certainly gone, and being prepared as best we can while working by our highways today is a given.

Please take time to reflect on your operations, and your field procedures while working on or around highways. While all the lights, signage, cones, vests, and well founded precautions cannot stop an accident, they certainly reduce the chances.

If you recall from the previous issue, Mr. Jeff Travis of Hopkins County, a thirty-year employee of Mr. Scott Vaughn was injured on a construction site in early August. Jeff was run over by a bulldozer while performing his surveying tasks as we all do on a regular basis. Jeff was in critical condition for several months. I attended the Audubon Chapter meeting a while back and received a report that he is improving. His injuries were very serious and extensive; recovery will be a slow process. Please keep him in your thoughts and prayers. You can also find information on Face Book at "Prayers for Jeff Travis" <http://www.facebook.com/#!/pages/Prayers-for-Jeff-Travis/142020265884627>.

This is a perfect time to take a moment to discuss safety with your employees and survey crews, ask and/or remind them to take the time to think about safety and to be acutely aware of their surroundings at all times. "Be Careful out there!"

The following is a brief review of activities since the Fall issue of *The Interior Angle* and our December 10, 2011 board of Directors meeting:

2012 KAPS Conference – You are invited to join us for the Kentucky Association of Professional Surveyors (KAPS) 2012 Annual Conference. The Clarion Hotel in Lexington, Kentucky on Newtown Pike will host the conference. Technical sessions will commence on Thursday February 23rd and conclude Saturday February 25th. Please take a minute to look over the conference brochure technical sessions and registration in this issue. The conference committee is and was dedicated, committed and have been working hard to put together a well rounded, informational and entertaining conference. Thank you for a job well

done!

Fall Seminars – The fall seminars have now concluded, December 17th was the final KAPS seminar of 2011. Turnout was low, but we had great feedback and comments regarding the seminars that were presented. We presented seminars across the Commonwealth this year and have plans to do the same next year. Please take minute to look over the 2011 schedule and make suggestions for future seminars. And, spread the word about the quality of the seminars KAPS presents to members and non-members that need continuing education or just want to attend a worthwhile seminar to learn about new surveying technology, forensics, business and/or surveying standards. Molly and I have learned a lot about the fall seminar process, and we are already looking to the 2012 Fall Seminars. Thank you to everyone that assisted in putting this year's series together and to all of the presenters, instructors and attendees, you all helped make this another successful year.

Eastern Kentucky University – I was asked to speak to the EKU student contractors association and surveying class on December 01. It was an honor for me to be invited to speak to the class. I took the opportunity to share my experiences in surveying over my thirty-two year career. I explained that boundary surveying is an important and intricate part of the surveying profession, but there are many other important and interesting facets of surveying to explore. The students and professors alike asked some great questions and provided some very positive feedback. Before and after my time with the students, I spent some time with the professors. They feel as I do that the students are missing out on a great opportunities in surveying. EKU is offering a Minor in Surveying currently. This is yet another step in the right direction and an opportunity to grow the surveying profession.

Experience Only Route to Survey Licensure has Expired – This is a repeat from my previous report and article but one that I feel needs to be repeated. Currently there are three (3) routes to surveyor licensure under KRS 322.047 (1) (a). Approved applicants may continue under these routes towards licensure if they are "in the pipeline" as of June 30, 2011. "In the



pipeline” means as a minimum, that they have been approved to sit for the FLS examination. Because of this expiration, the board guidelines will need to be revised. This was discussed at the July Board of Licensure meeting.

Proposed Easement Regulation - Easement regulations have been discussed for quite some time. At the direction of the survey committee, the staff and board legal counsel drafted proposed language for easements. The language is a result of research along with communications with several utility companies by the board of licensure staff. A “DRAFT” document pertaining to new easement regulations was presented to the Survey Committee and the Board of Licensure at their committee and board meeting Thursday and Friday, July 07 and 08, 2011 and again discussed in their October 06 and 07 committee and board meetings. The July 06, 2011 draft language was distributed to KAPS and utility companies and interested parties for their review and comment. We discussed the proposed language at length in our September 17 KAPS board of directors meeting. As directed by our board of directors, I drafted a response to the language and presented that to the survey committee on October 06, 2011. The survey committee of the Board of Licensure has made some revisions to the language and will be providing that to KAPS for further review and comment.

NSPS – Action Update on Unified Organization The following are comments from William R. Coleman, PLS GISP NSPS President - The Member Organizations (MOs) of the American Congress on Surveying and Mapping (ACSM) have been working since the ACSM Congress meeting in San Diego in July, 2011 to develop a unified organization that would represent all geospatial professionals. Over the past four months many discussions have taken place to define membership categories, organizational structure, naming, and finances for the unified organization.

The National Society of Professional Surveyors (NSPS) has worked with the other MOs in an attempt to address their concerns relating to merging into one organization

that represents not only surveyors but also fellow geospatial professionals in geodesy, GIS, mapping, photogrammetry, and other related fields.

NSPS and staff have been working with the ACSM accounting firm to obtain financial advice as to the best way of consolidating ACSM with the MOs without endangering the current non-profit status that each organization enjoys. Additionally, NSPS has hired an attorney to represent all parties in providing the necessary legal advice relating to our reorganization.

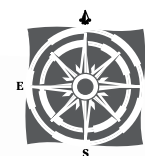
On November 10th, the presidents of NSPS, AAGS (American Association for Geodetic Surveying), and GLIS (Geographic and Land Information Society) and ACSM Executive Director Curt Sumner met via conference call to discuss some of the membership categories and organizational structure of the proposed unified organization. During the discussions the president of GLIS informed the other participants that GLIS was not interested in joining with the other two MOs at this time and stated that GLIS would handle its affairs beginning in 2012.

NSPS and AAGS agree to continue to work to develop a unified geospatial organization. AAGS has requested to join with NSPS in an affiliate status for 2012, as talks continue for the merging of the two organizations.

Both our legal and accounting counsel recommend that ACSM and NSPS be merged into a single entity by the end of 2011. The NSPS Board of Directors is working to achieve this goal and create an organizational structure that will represent surveyors, geodesists, mappers, geographic information specialists, and related professions.

House Bill Concurrent Resolution - Task Force

- A Bill (Concurrent Resolution) was submitted by Representative Leslie Combs, creating a Task Force to study/combat timber theft and trespass in Kentucky. Language in the resolution discusses, “indefinite, unmarked, and disputed property boundaries...” as one of the causes of timber trespass. Having received information about this bill from Kyle at the board of licensure, I notified our legislative committee, Rachel Phelps Bayens and Mike Helton of Government Strategies, LLC asking them to look into this. Bob Fentress, Rachel Phelps Bayens and Mike Helton met with Representative



EARL DUDLEY, INC.



Receiver with antenna, rover rod, and one year iNET subscription for as low as:

\$13,950 + tax

Get the same great package on our 'Worry-Free' lease

\$432.45 a month + tax

Basic Pricing as low as

\$11,490 (unit only)

With Glonass:

\$13,490

The GRS-1 Receiver

Earl Dudley Inc brings you another World's First in Survey Technology from Topcon

Earl Dudley, Inc and Topcon bring you another first in Surveying Industry Technology with the new GRS-1 receiver - Get centimeter accuracy with this All-in-One, hand-held dual frequency GNSS receiver and field Controller, with external antenna.

- Designed for network RTK, compatible with Earl Dudley's iNET network and other RTK networks.
- GNSS (GPS + GLONASS) 72 Channel RTK Satellite Receiver.
- Complete system weighs only 5 lbs!
- Survey Grade Accuracy
- Includes Windows Mobile 6.1. Compatible with other programs like Google Earth, allowing one to navigate job sites. The user is able to send and receive job specific data via email, directly on the handheld.
- GSM or CDMA Integrated cellular modem, easy to configure and use
- Built-in Digital Camera and magnetic compass
- WiFi and Bluetooth are standard
- 1 GB Memory



CALL
EARL DUDLEY,
INC TODAY
800-232-0096
TO SET UP A
DEMONSTRATION

WE SERVICE WHAT WE SELL

Call Toll Free: 1-800-232-0096 Local: 615-885-1274 www.earldudley.com

■ BIRMINGHAM, AL ■ ATLANTA, GA ■ JACKSON, MS ■ NASHVILLE, TN ■ CHARLOTTE, NC

Leslie Combs within four days of my notification and discussion to request that KAPS be involved with the task force. Representative Combs was most receptive to the request and indicated she would make the change to the task force. Thanks to all involved for their efforts to have KAPS included on this Task Force.

2012 Legislative Session – Received from Mr. David Cox Executive Director of the board of licensure. Below is a link to a publication for LRC discussing certain topics of interest for the upcoming session. The only thing directly affecting our board relates to **veteran licensing** on page 105. We need to be aware of this during the session and be prepared to educate the legislators. I will include this item on our January agenda for discussion. <http://www.lrc.ky.gov/lrcpubs/IB236.pdf> I have provided this information to our legislative committee and Government Strategies, LLC to watch for.

Christian County Flood Elevation Requirement – On November 03, 2011 the Christian County Community and Development Services (CDS) office issued a memorandum regarding Zone A flood hazard areas as it relates to platting. The memorandum states “when a survey you are performing involves illustrating an A Zone, **you will need to survey the base flood elevation contour**, not simply illustrate it as an approximate area.” During the December 10, 2011 Board of Directors meeting the issue of the Christian County policy regarding FEMA Zone A Base Flood Elevation (BFE) location by licensed surveyors was thoroughly discussed. Understanding that the surveyor has the ability to identify the BFE contour on the ground as well as the survey drawing and/or plat, the board felt there is a FEMA Zone A determination implication by illustration of the BFE contour on the drawing/ plat. The unanimous consensus is the policy is in conflict with the stated FEMA policy and procedures and will most likely be harmful to members of the public relative to floodplain issues. The board voted to issue a letter to CDS stating that KAPS does not support the proposed policy and is opposed to the premise of directing that a licensed professional surveyor can make said determination. This

position was further amplified after one of our Western Kentucky floodplain practitioners confirmed our salient points with the FEMA Region 4 floodplain engineer.

Lightsquared Technology. FCC and the effect on GPS Concerns - The LightSquared issue continues to be a topic. For those of you that have not been made aware, please check out the website at the end of this article for up to date news about the technology and the affect it could have on GPS. LightSquared is a company that is building a nationwide wireless broadband system utilizing 4G LTE technology that is both space based (satellite) and terrestrial based (cell towers). The company plans to provide 4G wireless technology to 90% of the U.S. population by 2015. This has generated a great deal of concern among the GPS user community that such a strong signal so close to the frequency that GPS utilizes will “jam” the GPS signal making it unusable. Protests have been sent to the FCC in this regard by the Pentagon, Lockheed Martin, DoD, DoT, and The Save our GPS Coalition which is backed by Caterpillar, Deere Company, UPS, Garmin, and others. The website for the Coalition is www.saveourgps.org.

Molly continues to do a great job for us in the KAPS office, please take a minute to call her, or even better yet stop by the KAPS office to meet and get to know her. You will not be disappointed. In closing, thank you for the opportunity to serve you. I promise that I will continue to serve the membership and the Board of Directors to the best of my ability. I will strive to achieve any goals that we set and to keep KAPS and the surveying profession moving forward and in a positive direction. I look forward to visiting with our membership throughout the year and will to do my best to get new members involved in KAPS. I truly look forward to making new friends this year. Please don't hesitate to call or contact me.

Professionally
Don Pedigo, PLS
KAPS President, 2011 & 2012
DDS Engineering, PLLC
148 Chester Court, Bowling Green, Kentucky 42103
270-843-2247 (Work)
270-783-1071 (Cell)
dpedigo@ddsengineering.com (Work)
dpedigo@SCRTC.com (Home)

2012 BOARD OF DIRECTORS

Ben Quinn, PE, PLS Chair 65 Aberdeen Dr. Glasgow, KY 42141 (270) 651-7220 bquinn@aei.cc	Richard Howerton, PLS Board Member 404A Main St. Greenup, KY 41144 (606) 473-5684 richard.howerton.sr@howerton-eng.com	James Sigler, PE Board Member 400 E. Vine St. #300 Lexington, KY 40507 (859) 233-2100 sigler@entran.us
Randall Russell, PE Vice Chair 452 Versailles Road Frankfort, KY 40601 (502) 695-4357 rrussell@kenvirons.com	Thomas Lester, PE Board Member College of Engineering, 312 CRMS Bldg. Lexington, KY 40506 lester@engr.uky.edu	Beverly Smith, Board Member 1600 Man O' War Blvd. Lexington, KY 40513 beverly.smith@insightbb.com
David Atwell, PE, PLS Secretary 606 New Street Horse Cave, KY 42749 retiredatwell@hotmail.com	Neville Pinto, PhD Board Member J.B. Speed School of Engineer- ing, University of Louisville Louisville, KY 40292 (502) 852-6281 ngpint01@gwise.louisville.edu	Dennis Smith, PE, PLS Board Member 148 Chester Court Bowling Green, KY 42103 (270) 843-2247 ddsmith@ddsengineering.com
Steven Gardner, PE 340 South Broadway, Ste. 200 Lexington, KY 40508 (859) 233-2103 jsgardner@engrservices.com		Sam Williams, PE, PLS Board Member 1555 Old Frankfort Pike Lexington, KY 40504 (859) 425-2810 swilliam@lexingtonky.gov

2012 CALENDAR OF EVENTS

April 13	PE, PS Exams	Lexington KY
April 14	FE, FS Exams	Lexington & Louisville KY
April 6	Board Meeting	Frankfort KY
April 19-21	NCEES Southern Zone	Huntsville AL
July 20	Board Meeting	Frankfort KY
August 10	Board Meeting	Frankfort KY
August 22-25	NCEES Annual Meeting	St. Louis MO
October 5	Board Meeting	Frankfort KY
October 26	PE, PS Exams	TBD
October 27	FE, FS Exams	TBD



B. David Cox, Executive Director

Kentucky State Board of Licensure for Professional Engineers and Land Surveyors
Kentucky Engineering Center, 160 DEMOCRAT DRIVE • Frankfort, Kentucky 40601

THE BOARD REPORT

Board Members

The Board elected the following officers for 2012:

Randall Russell, PE – Chair
David Atwell, PE, PLS – Vice Chair
David Sigler, PE – Secretary / Treasurer

Engineering and Surveying Exams

The results of the October 2011 exams are below. The second percentage shown in each line below is the national average.

Fundamentals of Engineering
First Time Takers 63/84 = 75%; 74%
Repeaters 21/39 = 54%; 32%
Total 84/123 = 68%; 64%

Principles & Practice of Engineering
First Time Takers 61/95 = 64%; 66%
Repeaters 15/37 = 41%; 29%
Total 76/132 = 58%; 52%

Fundamentals of Surveying

First Time Takers 12/21 = 57%; 63%
Repeaters 0/6 = 0%; 24%
Total 12/27 = 44%; 50%

Principles & Practice of Surveying

First Time Takers 3/8 = 38%; 66%
Repeaters 0/3 = 0%; 30%
Total 3/11 = 27%; 52%

Enforcement Statistics 2011

Open Cases as of January 1, 2011:
162

*Cases Opened:	102
**Cases Completed	170
Open Cases as of Dec. 31, 2011	94

*65 engineering, 30 surveying, 7 both for a total of 102

**Closed with no disciplinary action	47%
Admonishments, warnings	22%
Licenses inactive/retired (CPD issues)	14%
Other (fines, probation, etc.)	11%
Revocations	5%
Suspensions	1%

DISCIPLINARY ACTIONS

For The Period

October 9, 2011 – January 13, 2012

BRYAN RAY COX

The Board of Licensure recently discovered that Bryan Ray Cox, of Lexington, had listed himself as an “Electrical Engineer” on the internet website of DBR Engineering, and had distributed business cards which list his title as “Electrical Engineer”. KRS 322.020 prohibits any person not licensed as a professional engineer from using, assuming, or advertising in any way any title or description tending to convey the impression that he or she is a

professional engineer. The matter was resolved with an Agreed Injunction enjoining Bryan Ray Cox from holding himself out as a professional engineer unless and until he becomes licensed as such by the Board of Licensure. No penalties were assessed for the current violation, however the Agreed Injunction calls for a fine of \$1000 and seven (7) days in jail for Mr. Cox for any future violation. The Agreed Injunction was entered in the Franklin Circuit Court on January 3, 2012.

OLUSEGUN AKOMOLEDE

The Board of Licensure recently received information that Olusegun Akomolede, of West

Reconnaissance Surveys

Topographic Surveys

Utility Surveys

Control Surveys

Boundary Surveys

Aerial Mapping Coordination

As-Built Surveys

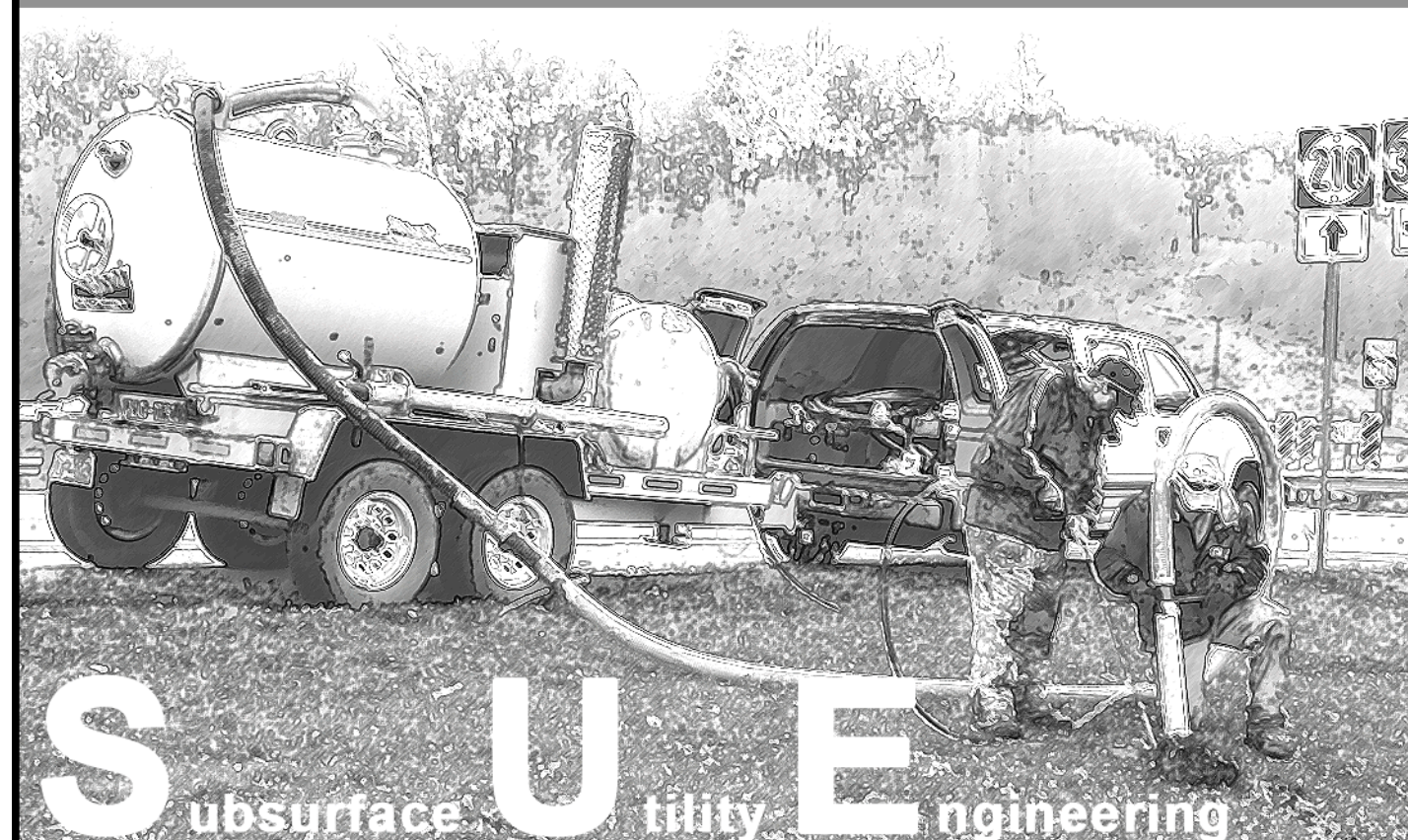
Construction Staking

Hydrographic Surveys

Right-of-way Surveys

Inventory Surveys

ALTA Surveys



AEI

AMERICAN ENGINEERS, INC.

PROFESSIONAL ENGINEERING

65 Aberdeen Drive
Glasgow, KY 42141
(270) 651-7220

2500 Nelson Miller Parkway
Louisville, KY 40223
(502) 245-3813

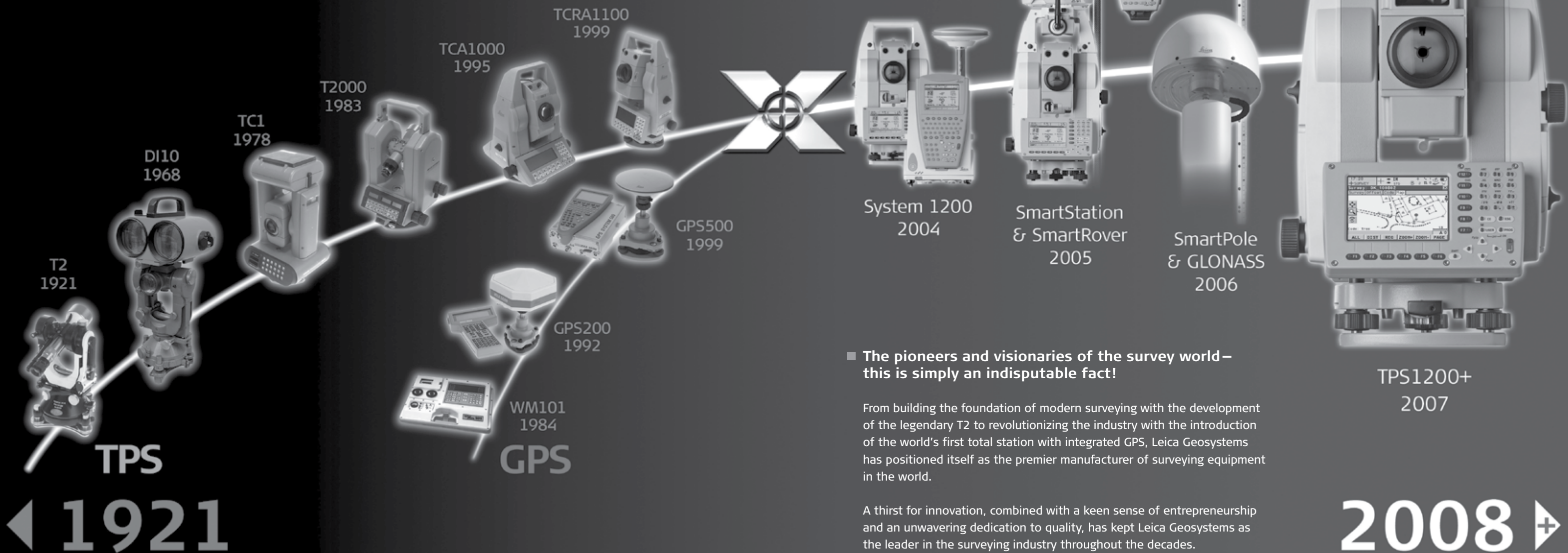
1634 White Circle, Suite 101
Marietta, GA 30066
(770) 421-8422

www.aei.cc



Defining industry standards for over a century

Isn't that Wild?



■ **The pioneers and visionaries of the survey world –
this is simply an indisputable fact!**

From building the foundation of modern surveying with the development of the legendary T2 to revolutionizing the industry with the introduction of the world's first total station with integrated GPS, Leica Geosystems has positioned itself as the premier manufacturer of surveying equipment in the world.

A thirst for innovation, combined with a keen sense of entrepreneurship and an unwavering dedication to quality, has kept Leica Geosystems as the leader in the surveying industry throughout the decades.

People you trust ■ Products you rely on ■ Service you count on

For more info, visit www.leica-geosystems.us

Ellerbusch Instrument Co.
Mike Ellerbusch
4509 Vine Street
Cincinnati, OH 45217
(800) 582-2644
www.ellerbusch.com

- when it has to be **right**

Leica
Geosystems

Chester, Ohio had engaged in the unlicensed practice of engineering in violation of KRS 322.020, through his company Ultra Technic Services, Inc. It was determined that Mr. Akomolede had signed an engineering report about the structural condition of a house in Northern Kentucky as a “PE”, listing his title as “Chief Geotechnical Engineer”. Mr. Akomolede is not licensed as a professional engineer in Kentucky and Ultra Technic Services, Inc is not a permitted engineering business entity. The matter was resolved with an Agreed Injunction enjoining Mr. Akomolede from further unlicensed practice of engineering until he becomes licensed by the Board. The injunction also prohibits Ultra Technic Services, Inc. from offering or providing engineering services in Kentucky until such time as it obtains a Business Entity Permit from the Board. No penalties were assessed for the current violation, however the Agreed Injunction calls for a fine of \$2000 and seven (7) days in jail for Mr. Akomolede and a fine of \$5000 for Ultra Technic Services, Inc. for any future violation. The Agreed Injunction was entered in the Franklin Circuit Court on January 3, 2012.

**GARY DUANE PFUEHLER, PE
ULTRA TECHNIC SERVICES, INC.**
Mr. Gary Duane Pfuehler, PE of Fairfield, Ohio was disciplined for providing engineering services on multiple projects in Kentucky through the firm Ultra Technic Services without a Business Entity Permit as required by KRS 322.060. The case was settled by a Consent Decree wherein Mr. Pfuehler acknowledged the violation and agreed to the following sanctions: (1) a \$3000 fine, and (2) completion of a course in Engineering Ethics offered by Texas Tech University. The Board accepted the Consent Decree on January

13, 2012.
WILLIAM CHRISTOPHER THOMPSON
The Board of Licensure recently received information that William Christopher Thompson, of Georgetown was holding himself out to the public as a professional engineer in violation of KRS 322.020. Mr. Thompson had distributed business cards listing himself as a “PE - Sr. Power and Controls Engineer” and “PE – Sr. Project Engineer”. The matter was resolved with an Agreed Injunction enjoining Mr. Thompson from holding himself out as a professional engineer unless and until he becomes licensed as such by the Board of Licensure. No penalties were assessed for the current violation, however the Agreed Injunction calls for a fine of \$1000 and seven (7) days in jail for Mr. Thompson for any future violation. The Agreed Injunction was entered in the Franklin Circuit Court on January 3, 2012.

MANSEL SHANE KRIMM, PLS
On April 15, 2011 Mr. Mansel Shane Krimm, PLS of Bardstown, KY entered into a Consent Decree with the Board of Licensure in settlement of a disciplinary action. Among other things, the Consent Decree required that Mr. Krimm pay a fine. Mr. Krimm failed to pay the fine within the time specified. In accordance with the terms of the Consent Decree and after being notified of the default, Mr. Krimm’s professional land surveyors license was suspended. Mr. Krimm was given additional time in which to pay the fine. When he failed to do so, in accordance with the terms of the Consent Decree, his license was revoked. The revocation became effective January 1, 2012.

**ROBERT L. SMITH, PLS
LAND MANAGEMENT SERVICES**
Mr. Robert L. Smith, PLS of Russell Springs was disciplined for offering land surveying services in Kentucky through the business entity Land Management Services, without

a Business Entity Permit, in violation of KRS 322.060. The case was settled by a Consent Decree wherein Mr. Smith acknowledged the violation, agreed to apply for a Business Entity Permit for the firm, and agreed to pay a \$1000 fine. The Board accepted the Consent Decree on January 13, 2012

RICHARD S. MATHENY, PLS
Mr. Richard S. Matheny, PLS, of Louisville was disciplined for violations of the surveying Standards of Practice, 201 KAR 18:150, in connection with a retracement survey. The case was settled by a Consent Decree wherein Mr. Matheny acknowledged the violations, and agreed to the following sanctions: (1) a letter of Reprimand, (2) a \$1000 fine, and (3) additional training in the surveying Standards of Practice. The Board accepted the Consent Decree on January 13, 2012.

GARY W. SLOAN, PLS
Mr. Gary W. Sloan, PLS, of Franklin, was disciplined for a pattern of violations of the surveying Standards of Practice, 201 KAR 18:150. The case was settled by a Consent Decree wherein Mr. Sloan acknowledged the violations, and agreed to the following sanctions: (1) a \$1000 fine, (2) additional training in the surveying Standards of Practice, and (3) a two year probation with quarterly review of surveying projects. Additionally, Mr. Sloan agreed to obtain a seal or stamp that conforms to the requirements of 201 KAR 18:104, section 5. The Board accepted the Consent Decree on January 13, 2012.

**WILLIAM M. REEVES, PE
PRO2E, LLC**
Mr. William M. Reeves, PE, of Milford, Ohio, was disciplined for a failing to respond to an audit of his Continuing

Professional Development (CPD) credits in a timely manner, in violation of 201 KAR 18:196, and for offering engineering services through his firm PRO2E, LLC in violation of KRS 322.060. The case was settled by a Consent Decree wherein Mr. Reeves agreed to the following sanctions: (1) a Letter of Reprimand and (2) a \$1000 fine. Additionally, Mr. Reeves agreed to file for a permit for PRO2E, LLC and he agreed to submit to an audit of his CPD credits for calendar years 2010 through 2014. The Board accepted the Consent Decree on January 13, 2012.

JOSEPH WILLIAM SCANNELL, PLS
Mr. Joseph William Scannell, PLS, of LaGrange, was disciplined for aiding and abetting the unlicensed practice of an individual whose surveying license had been suspended by the Board, in violation of KRS 322.180, Section 5; and for violations of the surveying Standards of Practice, 201 KAR 18:150. The case was settled by a Consent Decree wherein Mr. Scannell acknowledged the violations and agreed to the following sanctions: (1) a one month suspension of his surveying license, (2) a \$1000 fine, (3) additional training in the Standards of Practice, and (4) completion of a course in Surveying Ethics offered by New Mexico State University. The Board accepted the Consent Decree on January 13, 2012.

FOUR SEASONS ENVIRONMENTAL, INC.
Four Seasons Environmental, Inc., an Ohio Corporation with offices in Monroe, Ohio was disciplined for offering engineering services in Kentucky on a lapsed Business Entity Permit, in violation of KRS 322.060. The case was settled by a Consent Decree wherein the firm acknowledged the violation and agreed to pay a \$1000 fine. Additionally, the firm agreed not to offer engineering services until its Business Entity Permit is reinstated. The Board accepted the Consent Decree on January 13, 2012.

PRECISION
PRODUCTS

SURVEY TEAM

An army of precision,
to conquer any task.

TRIMBLE TECHNOLOGY.



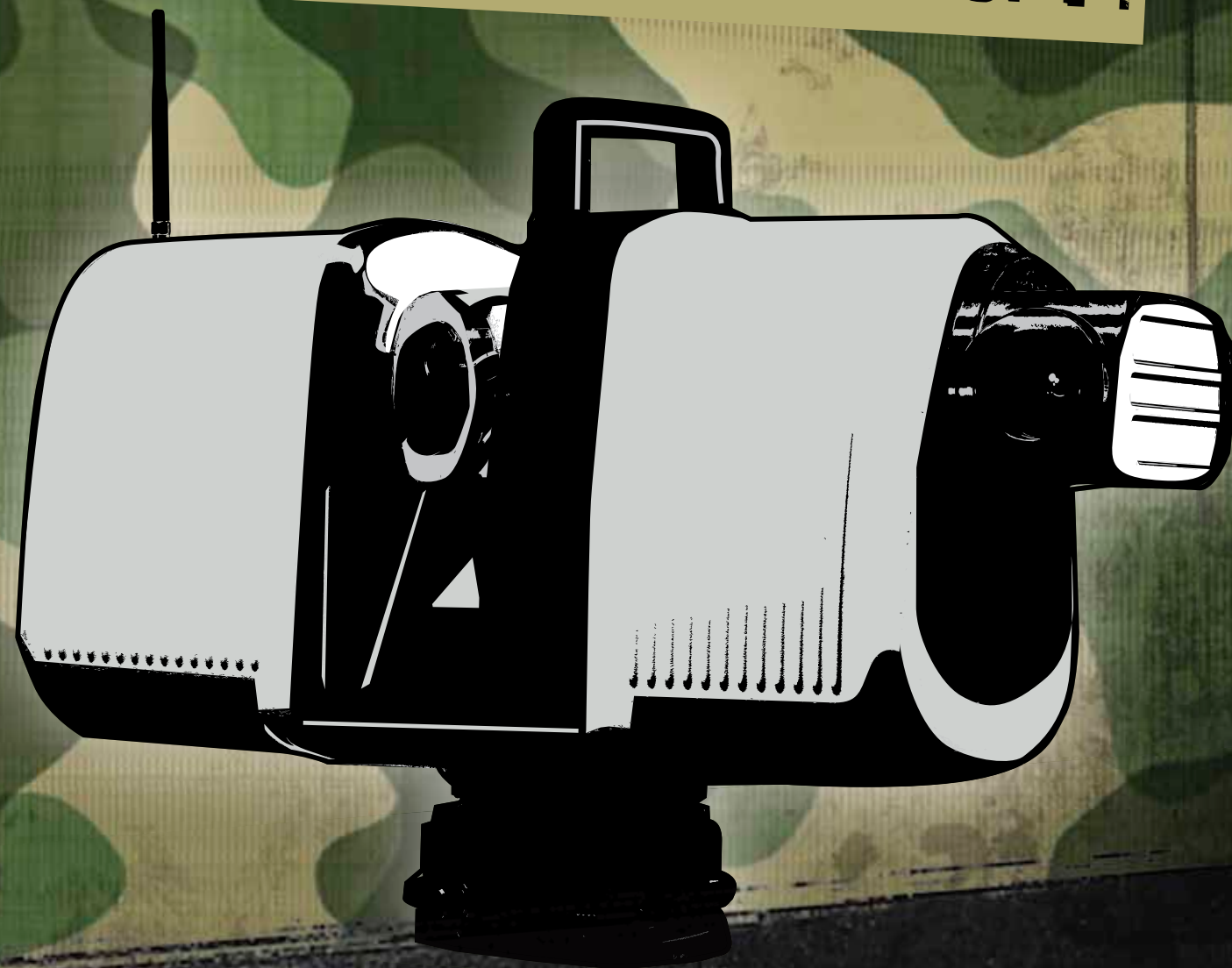
DURABLE



DEPENDABLE

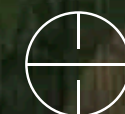


ACCURATE



REVOLUTIONARY

Get your army today...Contact your sales representative
Scott Shufflebarger 502-639-8196 (Central Kentucky) • Bill Short 859-621-3188 (East Kentucky)
• Jeff Clark 270-559-9097 (West Kentucky) or call 1-800-769-7999 or visit yourprecision.com



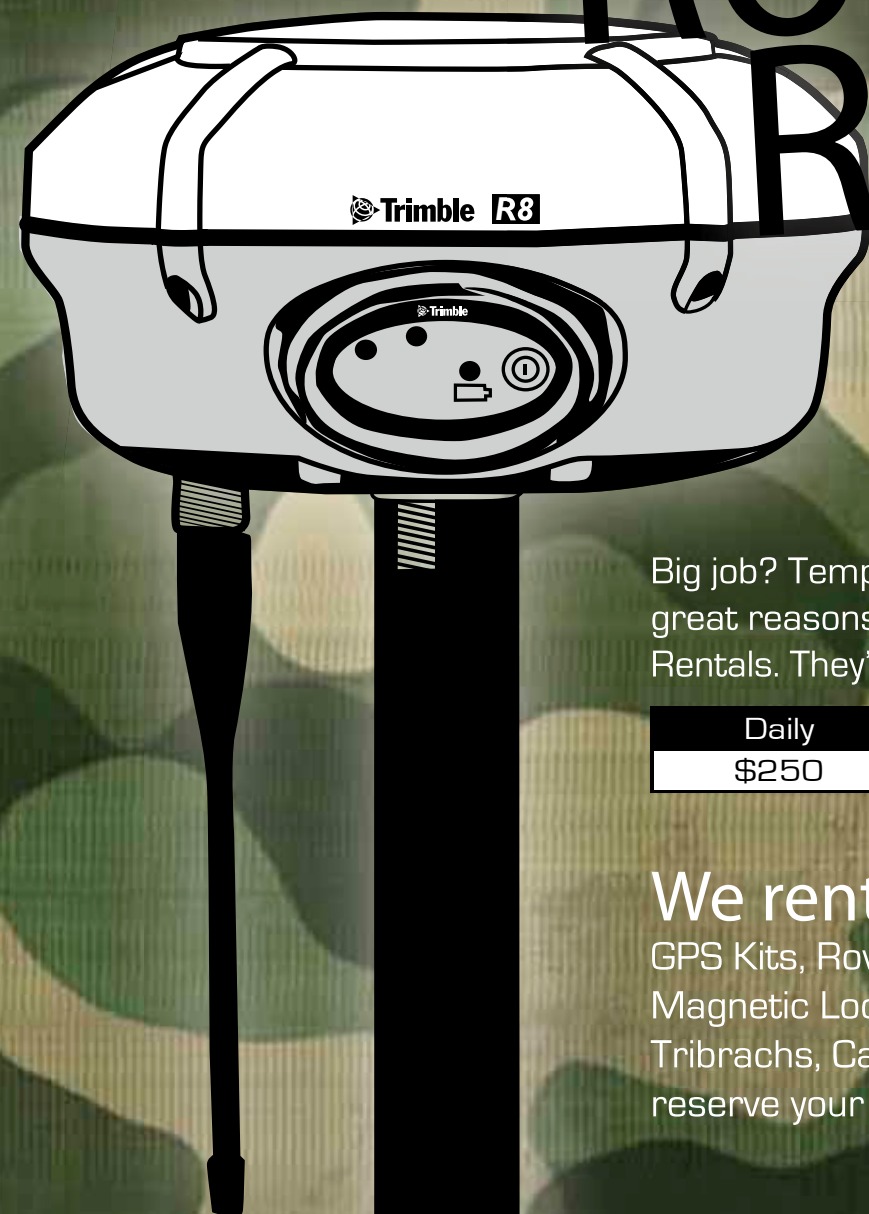
PRECISION
PRODUCTS

TSC3

Unlock the power of Trimble Access. The Trimble TSC3 controller is a groundbreaking handheld field computing solution that streamlines the flow of everyday surveying work and the number of peripheral devices you need in the field. Add images to your surveys easily with the integrated camera and automatic geotagging for easy identification. The Rugged Trimble TSC3 is purpose-built to make both Integrated Surveying and Spatial Imaging jobs easier, more efficient and more flexible.

- Optimized for Trimble Access field software
- QWERTY or ABC alphanumeric keypad
- Integrated Camera, Compass, and communications
- Internal GPS makes photo-geotagging easy
- Extended Battery Life
- Large and high resolution, full VGA touch screen display improves readability

The New Streamlined Solution



Rover Rentals

Big job? Temporary need? Financial pinch? All great reasons, of many, to utilize our Rover Rentals. They're fast, easy and convenient.

Daily	Weekly	Monthly
\$250	\$625	\$1600

We rent:

GPS Kits, Rovers, Data Collectors, Auto Levels, Magnetic Locators, Prism Poles, Tripods, Prisms, Tribrachs, Cables, and more. Call ahead and reserve your unit today! 1-800-769-7999

KAPS 2012 Conference - Lexington, KY

Join us at the 2012 Kentucky Association of Professional Surveyors Annual Conference held at the Clarion Hotel in Lexington, KY.

February 22nd - 25th

Come by our booth and mention this ad for a free t-shirt!



**PRECISION
PRODUCTS**



Get your army today...Contact your sales representative
Scott Shufflebarger 502-639-8196 (Central Kentucky)
Bill Short 859-621-3188 (East Kentucky)
Jeff Clark 270-559-9097 (West Kentucky) or
Call 1-800-769-7999 or visit yourprecision.com

© 2005 Trimble Navigation Limited. All rights reserved. Trimble and the Globe & Triangle logo are trademarks of Trimble Navigation Limited, registered in the United States Patent and Trademark Office and in other countries. All other trademarks are the property of their respective owners.

www.yourprecision.com



© 2005 Trimble Navigation Limited. All rights reserved. Trimble and the Globe & Triangle logo are trademarks of Trimble Navigation Limited, registered in the United States Patent and Trademark Office and in other countries. All other trademarks are the property of their respective owners.



**PRECISION
PRODUCTS**

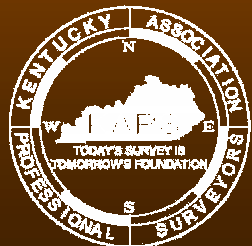
2012 KAPS Annual Conference

IN PURSUIT OF EXCELLENCE

*EXCELLENCE IS NEVER AN ACCIDENT:
IT IS ALWAYS THE RESULT OF HIGH INTENTION,
SINCERE EFFORT, INTELLIGENT DIRECTION,
SKILLFUL EXECUTION AND THE VISION
TO SEE OBSTACLES AS OPPORTUNITIES.*

February 22 - 25, 2012

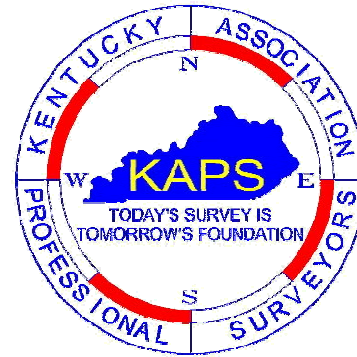
Clarion Hotel, Lexington, KY



KENTUCKY ASSOCIATION OF PROFESSIONAL SURVEYORS
124 Walnut Street • Frankfort, KY 40601 • mforrest@kaps1.com



(formerly Holiday Inn North)



KAPS

Kentucky Association of Professional Surveyors

124 Walnut Street

Frankfort, Kentucky 40601

Ph.: 800.866.3029, Fax: 502.695.2667

Email: mforrest@kaps1.com

Dear Colleagues:

I am privileged and honored to have been given the opportunity to serve you as the 2011 President. Please accept this letter as my personal invitation to you: join us for the Kentucky Association of Professional Surveyors (KAPS) 2012 Annual Conference. The Clarion Hotel in Lexington, Kentucky will host the conference. Technical Sessions will commence on Thursday February 23rd, 2012 and conclude on Saturday February 25th, 2012.

Networking is a tremendous benefit of being a member of the association. The conference affords the chance to network with other professionals, technicians, business owners and future team members across the Commonwealth. KAPS sponsored continuing professional development seminars in the fall and at the conference are up to date and reliable. We work closely with the Board of Licensure developing rules and regulations affecting the professional and the public. With the experienced help of our lobbyist, we introduce legislation beneficial to our profession and keep a watchful eye on legislation affecting the profession and professional. As a member, the support of the entire membership is at your fingertips. More importantly, as a KAPS member, you have the ability to stay informed and be involved. If you are not a member, please consider becoming one.

The surveying profession continues to evolve. Join us at the conference to learn about the updated Kentucky Standards of Practice; experience technological advancements and the latest trends in surveying. Our technical sessions are second to none. The secured conference instructors are experienced and knowledgeable—you won't be disappointed.

The technical sessions and equipment demonstrations at the conference benefit both the non-licensed as well as the licensee, so don't miss this great opportunity to include your non-licensed professionals. The knowledge they leave the conference with will strengthen your business and the survey profession.

For you non-members, please check the registration form where you will find an option to become a member of KAPS within the registration fee. It would be my pleasure to shake your hand and welcome you to our association.

Please don't hesitate to contact me if you have any questions or if I can assist you in any way. I look forward to seeing you in February—we are “In Pursuit of Excellence.” Travel safe.

Professionally,

Don Pedigo, PLS, KAPS President

Kentucky Association of Professional Surveyors

KAPS ANNUAL CONFERENCE - 2012

In Pursuit of Excellence

Wednesday, February 22

5:00 P.M.	Registration Opens
6:30 P.M.	2011 KAPS Board of Directors Meeting.

Thursday, February 23

7:00 A.M.	Registration *EXHIBITS OPEN*
8:00 A.M. - 12:00 P.M.	Technical Sessions
12:00 P.M. - 1:00 P.M.	Luncheon & Installation of Officers
1:00 P.M. - 5:00 P.M.	Technical Sessions
5:00 P.M. - 6:30 P.M.	Exhibitors Reception & Door prizes
6:30 P.M. - 7:30 P.M.	2012 KAPS Board of Directors Meeting
6:30 P.M. - ???	Hospitality Suite

DINNER ON YOUR OWN

COMPANION PROGRAM

THURSDAY, February 23, 2012

TBA A.M.	Breakfast at Hotel (on your own)
TBA A.M.	Triple L Meeting & Set-up Silent Auction
TBA A.M.	Tour of Governor's Mansion
TBA P.M.	Lunch in Frankfort
TBA P.M.	Return to Hotel
5:00 P.M.	Exhibitors Reception - DOOR PRIZES
	DINNER IS ON YOUR OWN

FRIDAY, February 24, 2012

TBA A.M.	Breakfast at Hotel (on your own)
10:00 A.M.	Meet in Hotel Lobby
10:30 A.M.	Jewelry Making - Dandelion Beads, Lexington
TBA P.M.	Lunch in Lexington
TBA P.M.	Return to Hotel
6:30 P.M.	Photo Sessions
7:00 P.M.	Awards Banquet - Carl Hurley

SATURDAY, February 25, 2012

No scheduled events. Have a safe trip home.

Visit online:

www.kaps1.com (click on conference)

Friday, February 24

7:00 A.M.	Registration *EXHIBITS OPEN*
8:00 A.M. - 12:00 P.M.	Technical Sessions
12:00 P.M. - 2:00 P.M.	Luncheon & General Membership Meeting
1:00 P.M.	Exhibits Close
2:00 P.M. - 6:00 P.M.	Technical Sessions
6:45 P.M. - 7:00 P.M.	Photo Sessions
7:00 P.M. - 8:30 P.M.	Awards Banquet
8:30 P.M. - 9:30 P.M.	Dr. Carl Hurley, Ed.D, CPAE

"America's
Funniest
Professor"

Dr. Carl Hurley



Saturday, February 25

7:30 A.M.	Past-President's Breakfast
8:00 A.M. - 5:00 P.M.	Technical Sessions
12:00 P.M. - 1:00 P.M.	Lunch Included



Clarion Hotel

1950 Newtown Pike
Lexington, Kentucky 40511
Phone: 859.233.0512
Fax: 859.231.9285

Reserve your room today!

*Call before February 1, 2012 and
mention KAPS to receive a discount rate.



TECHNICAL
SESSIONS



Thursday, February 23

Time	Session	Credits Offered
□ 8:00 A.M. - 5:00 P.M.	Forensic Surveying Presenter - Bernard M. Telatovich, PE, Esq. Dr. Frank Willis, PhD, PE, PLS.	8 PDH
□ 8:00 A.M. - 10:00 A.M.	KY Land Patents and the Secretary of States Website Presenter - Kandie Adkinson	2 PDH
□ 10:00 A.M. - 12:00 P.M.	Surveyor Awareness Licensure in Other States Presenter - G. Michael Ritchie, PE, PLS, PSM, CP	2 PDH
□ 1:00 P.M. - 3:00 P.M.	KYTC: R/W Monumentation and LiDAR Presenter - Dan Farrell, PLS (KYTC Statewide Surveyor)	2 PDH
□ 3:00 P.M. - 5:00 P.M.	Licensure Board Panel Discussion	2 PDH

Friday, February 24

Time	Session	Credits Offered
□ 8:00 A.M. - 6:00 P.M.	Water Wars and Riparian Rights Presenter - Bernard M. Telatovich, PE, Esq. Dr. Frank Willis, PhD, PE, PLS	8 PDH
□ 8:00 A.M. - 10:00 A.M.	New Survey Technology Presenter - G. Michael Ritchie, PE, PLS, PSM, CP	2 PDH
□ 10:00 A.M. - 12:00 P.M.	Lewis and Clark Presenter - Barry Brock, PLS	2 PDH
□ 2:00 P.M. - 4:00 P.M.	All You Need to Know About Using KYCORS and more... Presenter - Danielle Kelly, KYCORS Administrator for Division of Highway Design	2 PDH
□ 4:00 P.M. - 6:00 P.M.	Changing a City's Boundary, the Surveyor's Role Presenter - Kandie Adkinson	2 PDH

Saturday, February 25

Time	Session	Credits Offered
□ 8:00 A.M. - 12:00 P.M.	KRS.322 / MTS / Code of Conduct Presenter - Marco Rajkovich, Esq., PE, PLS	4 PDH
□ 1:00 P.M. - 5:00 P.M.	Ethical Considerations and Tips on Expert Witness Testimony Presenter - Marco Rajkovich, Esq., PE, PLS	4 PDH



THURSDAY SESSIONS

Forensic Surveying

8:00 A.M - 5:00 P.M.

Bernard M. Telatovich, PE, Esq. & Dr. Frank Willis, PhD, PE, PLS

This full-day workshop designed for intermediate to advanced surveyors who have extensive experience and may be involved with or interested in the forensic field, will address various areas where a surveyor may be involved in litigation-related matters.

In formulating the opinions required in such cases, the expert surveyor must be familiar with, in addition to his technical expertise, numerous complicated legal matters including the nature of lawsuits, the rules of evidence, civil procedure, rules of discovery, property law, tort law, other legal principles, and what the role of an expert is in litigation.

Forensic experts must have, at a minimum, a basic understanding of the legal process within which they participate, a process that can be quite complicated and intricate. Thus, this workshop will begin examining the role and duties of the expert witness, followed by the broad definition of “forensic surveying.” In addition, legal concepts such as jurisdiction, civil procedure, and evidence will be reviewed, as well as the elements of a lawsuit, which include the filing of a complaint, pleadings, interrogatories, and depositions.

The primary focus of the workshop will be on the types of cases in which forensic surveyors participate. The classic case, the boundary line dispute, will be examined using Rapides Parish Police Jury v. Grant Parish Police Jury, 924 So.2d 357, as a case study into not only procedural discussions of surveying boundary disputes, but also the importance of competent and thorough forensic surveying work. This classic case study will be presented by Dr. Frank Willis, the expert hired by the prevailing party in litigation. Dr. Willis will not only give the “true and behind the scenes” forensic analysis of this case, but will expand on the various concepts, legal theories, survey theories and real world working of this matter.

The Rapides Parish case, as well as numerous other select cases, expands on “Daubert Hearings” as well as the importance of retracement, preparation, and a quality surveyor’s report. This case will be used as a prime example for many of the matters discussed throughout the entire day.

In addition, other types of “non-classic” forensic surveying matters will be examined, including working as a forensic surveyor gathering data at an accident or crime scene and examining the work of other surveyors to determine adequate methodology and procedure. The workshop will review these scenarios, covering the need for certain evidentiary information, how to document the investigation, and what questions to ask.

Forensics involves gathering information and/or evidence for matters in litigation. The surveyor is uniquely trained to meticulously gather information on the project site every day. This skill makes the need for a forensic surveyor self-evident and this workshop will broaden attendees’ knowledge and skills such that they better understand the forensic surveyor’s role in litigation, not only related to property disputes, but related to various other types of cases and matters.

By the end of this session participants will be able to:

1. The definition of “forensic surveying” and how to apply existing knowledge and skills to matters under litigation.
2. How to apply the skills of a surveyor in forensic matters by studying actual cases that were in litigation and tried before a jury.
3. The intricacies of the legal process of litigation, including the discovery and trial phases, the role of the expert witness, and the requirements of evidentiary procedure.
4. The importance of competent and thorough forensic surveying work, including the duties, role, and expectations of surveyors in litigation related matters.

KY Land Patents & the Secretary of States Website

8:00 A.M. - 10:00 A.M.

Kandie Adkinson

If you need information about a Land Patent in Kentucky, Ms. Adkinson is the expert. In this session, Ms. Adkinson will explain the ins and outs of KY Land Patents and the exciting new features of the Secretary of States Website.

Surveyor Awareness Licensure in Other States

10:00 A.M. - 12:00 NOON

G. Michael Ritchie, PE, PLS, PSM, CP

States are increasingly enacting legislation or adopting regulations that define a variety of photogrammetry, GIS, and other geospatial activities as the “practice of surveying”, subject to state license. Many individuals today may unknowingly be practicing surveying without a license. This seminar will review the NCEES Model Law, the status of current licensing laws in the 50 states and efforts by geospatial organizations to affect laws and legislations, and alternate ways to get involved in your state. The seminar will also discuss differences between licensure and certification, as well as assist firms and practitioners in determining if they are in compliance with applicable laws.

Course Outline:

Certification vs. Licensure, The Surveying Law, Photogrammetrists/GIS Professionals, Report of the Joint Task Force (for NCEES), State Surveying License Laws, and A National License?

KYTC: R/W Monumentation and LiDAR

1:00 P.M. - 3:00 P.M.

Dan Farrell, PLS, KYTC Statewide Surveyor

This two part session covers Kentucky Transportation Cabinet (KYTC) topics R/W Monumentation and LiDAR Data. The R/W portion of the class will include discussion topics such as existing marker types, methods of installation, reason for recent changes to standards and the role of the surveyor as it relates to KYTC R/W monuments. The LiDAR portion of the class will explore the types of LiDAR currently used by KYTC, the expected accuracies, setting control, QA/QC, the surveyor’s role and how LiDAR can benefit the surveyor.

Licensure Board Panel Discussion

3:00 P.M. - 5:00 P.M.

Board of Licensure Members & Staff

The Licensure Board Panel discussion provides the licensee the opportunity to meet and ask questions of the licensure board and staff. The panel discussion affords the licensee the opportunity to ask questions and get real and detailed input about legislation, rules and regulations that are of interest and that directly affect the surveying profession and the licensed professional. The panel is typically made up of board members, staff and board council with The Kentucky State Board of Licensure for Professional Engineers and Land Surveyors.



FRIDAY & SATURDAY SESSIONS

Water Wars and Riparian Rights

8:00 A.M. - 6:00 P.M.

Bernard M. Telatovich, PE, Esq. & Dr. Frank Willis, PhD, PE, PLS

The primary focus of WATER WARS is on property ownership and property rights along rivers, streams, lakes, and the ocean. While the seminar will provide detailed information on numerous topics, including engineering, hydrology, dendroecology, surveying, law, and real estate, the primary focus of the seminar is geared toward the practicing surveyor.

The practice of surveying focuses on measuring points and locating evidence. WATER WARS directs the surveyor around the legal aspects of water rights and the technical nature of determining property rights and limits along waterways. Disputes over property rights along water ways separating states are within the original jurisdiction of the Supreme Court of the United States. Various Supreme Court cases will be analyzed. The analysis will not only focus on the legal resolution of these matters, but also on the technical issues raised as they relate to property rights, surveying related principles, and ownership.

On a more microscopic level, WATER WARS will address the property line issue/boundary disputes that arise between adjoining property owners within riparian areas. These disputes, which often begin with the results of a simple boundary survey, become not only highly detailed (and expensive) disputes, but also disputes that invoke a knowledge of property rights principles (like ordinary high water) which this seminar will focus on. Thus, the expertise from practical application of surveying principles in these matters, will be applied to this dynamic one of a kind seminar.

New Survey Technology

8:00 A.M. - 10:00 A.M.

G. Michael Ritchie, PE, PLS, PSM, CP

Technology has had a profound impact on the surveying arena over the last several years. The profession bears little resemblance to what it was just a few years ago. The impacts of the technological changes can be found in cost savings, improved quality, reduction in the time needed to complete a typical project, and greatly increased accuracy. This seminar focuses on the technology available to today's surveying professionals and more importantly, how the benefits of this technology impact the engineering and surveying professionals that are the end users of the mapping or sensor information. The program is designed in an informal, yet highly informative format, to provide maximum benefit to those working with maps and other spatial information.

Course Outline:

Brief Introduction into Technology, Terrestrial LiDAR, Bathymetric LiDAR, Mobile Mapping Systems

Lewis and Clark

10:00 A.M. - 12:00 NOON

Barry Brock, PLS

This course retraces the steps of the Lewis and Clark expedition called the "Corps of Discovery". It's impact on the western expansion of America and surveying's role in the journey are also discussed.

All You Need to Know About Using KYCORS and more...

2:00 P.M - 4:00 P.M.

Danielle Kelly, KYCORS Administrator for Div. of Highway Design

This session will explore Kentucky’s Continuously Operating Reference System including topics such as Reference Systems, Real Time Network Systems, Differential Systems, GPS Best Practices, GPS Site Calibration and OPUS Solutions.

Changing a City’s Boundary, the Surveyor’s Role

4:00 P.M. - 6:00 P.M.

Kandie Adkinson

KRS 81A.470 requires that “*If the limits of a city are enlarged or reduced, the city shall... map and a description shall be prepared by a professional land surveyor.*” During this session, Kandie Adkinson will take a step-by-step approach explaining the surveyor’s role in the submission to the Secretary of States office. Sample approved submittals, common mistakes, formatting of documents and required certifications will be covered in detail.

SATURDAY SESSIONS

KRS.322 / MTS / Code of Conduct

8:00 A.M. - 12:00 P.M.

Marco Rajkovich, Esq., PE, PLS

This course will focus on the Minimum Technical Standards for Professional Land Surveyors in Kentucky, with applications of the Code of Professional Practice and Conduct.

Ethical Considerations and Tips on Expert Witness Testimony

1:00 P.M. - 5:00 P.M.

Marco Rajkovich, Esq., PE, PLS

This course will focus on the mechanics of Expert Testimony for Professional Engineers and Land Surveyors in Kentucky with applications of the Code of Professional Practice and Conduct.



KAPS ANNUAL CONFERENCE - 2012

Meet the Speakers

Bernard M. Telatovich, PE, Esq., is the President of Consulting Services & Investigations, LLC (CSI) a Forensic and Investigative Engineering firm in Bethlehem, Pennsylvania. He is also a part owner and Vice President at Benchmark Civil Engineering Services, Inc., a Land Development, Transportation and Surveying firm in Allentown, Pennsylvania.

A graduate of Hazleton Area High School, Mr. Telatovich received his Bachelor of Science in Civil Engineering from Lehigh University in 1985. In 1993, he obtained a Juris Doctorate degree from the University of Florida.

His career as an engineer has taken him from Florida where he worked his way from project engineer to Vice President of a medium size engineering firm, and to the Lehigh Valley where he has worked with Benchmark since 2004. In between, he has worked for contractors in New York City and as an Assistant County Attorney for Pasco County, Florida. His forensic work, which includes accident reconstruction and premises liability, is ever expanding and has taken him from New York, to Florida, and as far west as Wyoming as a consultant on numerous related forensic engineering matters. He also provides marketing services in Metropolitan New York City area.

Mr. Telatovich is a registered professional engineer in three states (PA, NY, and FL) and a licensed attorney in two states (PA and FL.) He remains active on the national and local scene with numerous societies and organizations. He is a Region Governor for Region 2 of the American Society of Civil Engineers and a Past-President of the Lehigh Valley Chapter of the American Society of Civil Engineers. He is also a Past Chairperson at the Lehigh Valley Engineering Council, a member of the engineering academic advisory board at Lehigh Career Technical Institute, a diplomat for the American College of Forensic Examiners, a member of the Bar Association of Lehigh County, a Board Member for the Pediatric Cancer Foundation of the Lehigh Valley, and a member of several National Engineering Honor Societies.

Over his career, he has lectured before numerous groups on a local and national level including state and national surveying conferences, bar associations, contractor groups, professional society groups, and schools. He has been an adjunct professor at the college level for more than ten years in the engineering, technology and legal departments. He writes articles for his forensic newsletter for CSI, and has been a contributing author for many articles in the East Penn Business Journal.

Dr. Frank Willis, PhD, PE, PLS, Founder and CEO of Willis Engineering and Scientific, LLC which specializes in engineering spatial analyses, physics, dynamics, hydraulic/hydrologic systems, and forensic civil and environmental engineering Willis' Ph.D. in Engineering and Applied Science focuses on scientific application of engineering and natural science principles to forensic science. Technologies involved are remote sensing, laser scanning, close-range photogrammetry, digital modeling, mathematical simulation, advanced statistics, plant growth time series statistics, dendroecology, and animated graphics.

Willis has 35 years of experience in civil engineering, environmental engineering, and land surveying. He guest lectures at various universities, and seminars across the country. He has served as leading expert on civil and environmental cases involving land boundaries, and forensic engineering. Willis was the leading expert on the Rapides Parish v. Grant Parish boundary dispute which is the most famous boundary dispute in Louisiana in recent history, and it gained national attention.

Kandie Adkinson is the Kentucky Secretary of State's administrative supervisor of the Land Office Division, researches land office records to assist genealogists, historians, surveyors, and title companies. Her technical leaflet, "The Kentucky Land Grant System," serves as a reference guide for researchers across the United States.

G. Michael Ritchie, PE, PLS, PSM, CP is President and CEO of Photo Science, a full-service Geospatial Solutions company headquartered in Lexington, Kentucky with branch offices in Oakland, California; Colorado Springs, Colorado; Orlando and St. Petersburg, Florida; Norcross (Atlanta), Georgia; Bowie (Washington DC), Maryland; Ann Arbor, Michigan; and West Chester, Pennsylvania.

Mr. Ritchie graduated from the University of Kentucky in 1972 with a Bachelors Degree in Civil Engineering. He has more than 40 years of experience in his field and currently holds professional engineering registrations in sixteen (16) states, is a licensed professional land surveyor in nine (9) states, and is a nationally recognized Certified Photogrammetrist. He has served as Project Manager for numerous state and local government engineering, surveying, mapping, and GIS projects, as well as for large federal geospatial data projects including projects for various U.S. Department of Defense agencies. Under his leadership, Photo Science has grown to over 200 staff, 10 aircraft, and several state-of-the-art digital sensors.

KAPS ANNUAL CONFERENCE - 2012

Meet the Speakers

Mr. Ritchie is a past President for MAPPS, KSPE, and KCEC. He is a formerly a National Director of NSPE. He is past National Chairman on COFPAES, which represents the ACSM, AIA, ASCE, MAPPS, and NSPE. Mr. Ritchie has served as National Director representing Kentucky to the American Council of Engineering Companies. In 1999, Mr. Ritchie was elected to the College of Fellows of the American Council of Engineering Companies.

Mr. Ritchie has served on the NCEES Task Force on the model law revisions to the practice of land surveying and photogrammetry. In addition, he was recently completed a two-year term on the National Geospatial Advisory Committee for the U.S. Department of Interior to advise the Federal Government on use of Geospatial Technology.

Barry Brock, PLS has over 20 years of surveying experience and has taught Board approved continuing education courses since 1998. Barry retired from the Lexington-Fayette Urban County Government in 2009 where he worked in the Division of Engineering and he now works part-time for HDR Inc. in Lexington.

Dan Farrell, PLS is a Professional Land Surveyor in the Commonwealth of Kentucky and is currently the Statewide Surveyor for the Kentucky Transportation Cabinet. Dan has worked for the Kentucky Transportation Cabinet for 36 years and is a graduate of Cincinnati State College in Cincinnati, Ohio. He also manages the Statewide Contracts for conventional surveying as well as Aerial Photogrammetry.

Danielle Kelly is the Kentucky Height Modernization Coordinator for the Division of Highway Design in the Kentucky Transportation Cabinet (KYTC). She has worked in academic, public and private sectors in the areas of scientific research, GIS, GPS and photogrammetry. She started working on the KY Height Mod program as the KYTC Liaison in 2004, and now coordinate the program on behalf of KYTC.

Ms. Kelly is responsible for building and administering the state network of continuous operating reference stations known as KYCORS. She provides all hardware and software support for the system of receivers (Trimble NetR5s) and servers (Trimble GPSNet & associated modules) as well as end user support. End user support includes teaching workshops on using KYCORS services. She also provides technical support and training for KYTC survey crews on the use of Trimble survey equipment, software and field activities. In addition, she is responsible for all survey related equipment and software purchasing and maintenance contracts.

Marco Rajkovich, Esq., PE, PLS is a participating attorney with the firm RAJKOVICH, WILLIAMS, KILPATRICK & TRUE, PLLC, his primary areas are Minerals and Energy, Environmental, and General Litigation. He obtained his Juris Doctor from the University of Kentucky where he also earned a BS degree in Civil Engineering with Mining Option. He is licensed in Kentucky as a professional Engineer and as a Professional Land Surveyor.



KAPS ANNUAL CONFERENCE - 2012

Dr. Carl Hurley, Ed.D, CPAE

Dr. Carl Hurley grew up in the Appalachian Mountains of Eastern Kentucky and now resides in Lexington. He holds a Bachelor of Science and a Master’s Degree in Industrial Education from the Eastern Kentucky University and a Doctorate in Education from the University of Missouri.



Carl spent several years as an educator in his native state. For eight years, he was a professor of education at Eastern Kentucky University and coordinated the university’s secondary education program.

Several years ago, faced with an increasing number of invitations to speak, Carl left his professorship to become a full-time speaker and entertainer.

Featured on what was formerly the Nashville Network, he has also made numerous appearances on the Bill Gaither Homecoming Series and Public Television. Carl holds the professional designation of Certified Speaking Professional and was inducted by his peers in to the National Speakers Association CPAE Speakers Hall of Fame. Carl’s humor is heard regularly on the XM Satellite Network on Channel 150 and the Sirius Satellite’s LAUGH FIRST Channel 105.

Perhaps he is most proud of being inducted into ECU’s Alumni Hall of Fame and receiving the institution’s honorary doctorate.

Carl believes that humor is the best carrier for his message. He has certainly earned the title of “America’s Funniest Professor.” Please welcome with me...Dr. Carl E. Hurley!

2012 KAPS CONFERENCE REGISTRATION FORM

CANCELLATION REFUNDS: 30 days prior to event: 100% • 10-29 days prior to event: 50% • 0-9 days prior to event: 0%

NAME

LASTFIRSTMI

NAME FOR BADGE

COMPANY NAMEBUSINESS PHONE

ADDRESSCITYSTATEZIP

EMAILCELL PHONE

SPOUSE ATTENDING? Yes No (circle one)NAME OF SPOUSE

KAPS MEMBER? Yes No (circle one)LIKE TO JOIN KAPS? Yes No (circle one; **form will be emailed*)

PLEASE MARK WHICH SESSIONS YOU WISH TO ATTEND *space is limited in some classes*

Thursday, February 23, 2012

- ☐ 8:00 A.M. - 5:00 P.M.
- Forensic Surveying / Bernard M. Telatovich, PE, Esq. and Dr. Frank Willis, PhD, PE, PLS
- ☐ 8:00 A.M. - 10:00 A.M.
- KY Land Patents & the Secretary of States Website / Kandie Adkinson
- ☐ 10:00 A.M. - 12:00 P.M.
- Surveyor Awareness Licensure in Other States / G. Michael Ritchie, PE, PLS, PSM, CP
- ☐ 1:00 P.M. - 3:00 P.M.
- KYTC: R/W Monumentation and LiDAR / Dan Farrell, PLS
- ☐ 3:00 P.M. - 5:00 P.M.
- Licensure Board Panel Discussion / KY Board of Licensure and Staff

Friday, February 24, 2012

- ☐ 8:00 A.M. - 6:00 P.M.
- Water Wars and Riparian Rights / Bernard M. Telatovich, PE, Esq. and Dr. Frank Willis, PhD, PE, PLS
- ☐ 8:00 A.M. - 10:00 A.M.
- New Survey Technology / G. Michael Ritchie, PE, PLS, PSM, CP
- ☐ 10:00 A.M. - 12:00 P.M.
- Lewis & Clark / Barry Brock, PLS
- ☐ 2:00 P.M. - 4:00 P.M.
- All You Need to Know About Using KYCORS and more... / Danielle Kelly
- ☐ 4:00 P.M. - 6:00 P.M.
- Changing a City's Boundary, the Surveyor's Role / Kandie Adkinson

Saturday, February 25, 2012

- ☐ 8:00 A.M. - 12:00 P.M.
- KRS.322 / MTS / Code of Conduct / Marco Rajkovich, Esq., PE, PLS
- ☐ 1:00 P.M. - 5:00 P.M.
- Ethical Considerations and Tips on Expert Witness Testimony / Marco Rajkovich, Esq., PE, PLS

REGISTRATION TYPE	MEMBER	NON-MEMBER	AMOUNT
FULL REGISTRATION <i>Includes Thursday, Friday & Saturday Lunch, Friday Banquet, Admission to Exhibits, Saturday Technical Sessions; lodging NOT included</i>	\$295.00	\$495.00 <i>(*includes option to become a member)</i>	
ONE DAY REGISTRATION <i>Please mark which day you will attend:</i> <input type="checkbox"/> Thursday includes lunch, sessions, & exhibits <input type="checkbox"/> Friday includes lunch, sessions, & exhibits	\$175.00	\$275.00	
SATURDAY SESSIONS ONLY REGISTRATION <i>Includes lunch</i>	\$150.00	\$250.00	
NON-LICENSED TECHNICIAN REGISTRATION <i>Please mark which day you will attend:</i> <input type="checkbox"/> Thursday includes lunch, sessions, & exhibits <input type="checkbox"/> Friday includes lunch, sessions, & exhibits	\$130.00 <i>per day</i>	\$145.00 <i>per day</i>	
COMPANION PROGRAM REGISTRATION <i>Includes Thursday & Friday lunch, Friday Banquet, Admission to Companion Program & Exhibits</i>	\$125.00	\$275.00	
FULL-TIME STUDENT REGISTRATION <i>Thursday & Friday only</i>		<i>per day</i> \$25.00	
EXHIBIT PASS ONLY	\$30.00	\$40.00	
EXTRA MEALS <i>Please mark below the # of extra meals needed:</i> <input type="checkbox"/> Thursday Lunch / <input type="checkbox"/> Friday Lunch / <input type="checkbox"/> Saturday Lunch <input type="checkbox"/> Friday Evening Banquet (coat & tie event)	\$30.00 \$55.00	\$35.00 \$60.00	
TOTAL REGISTRATION AND EXTRAS			\$
ADD LATE FEE (if postmarked after February 1, 2012)	\$30.00	\$50.00	
GRAND TOTAL DUE TO KAPS			\$

☐ CHECK PAYABLE TO KAPS ENCLOSED (mail to KAPS, 124 Walnut Street, Frankfort, KY 40601)

☐ VISA / MASTERCARD / DISCOVER # (email to mforrest@kaps1.com or fax 502.695.2667)

EXP DATE3-DIGIT V-CODE (on back of card)SIGNATURE

EVERYTHING YOU NEED RIGHT OUT OF THE GATE

NEW AND POWERFUL!

SurveyMaster is standalone CAD-based software designed as a seamless integration with Topcon field equipment resulting in a significant savings in office time. SurveyMaster is the only software available that is transportable from office PC to field PC with USB key.

No money down for 60 months

→ **\$158.89**

monthly payments

Hayes 'Worry-Free' Lease

→ **\$218.88**

monthly payments

Kit number:

→ **211113**

when you call

The perfect kit for a conventional two-man survey crew.

→ Topcon GTS-236W, 6" Accuracy → SurveyMaster Lite Drafting Package → 8ft Prism Pole → Tripod Bracket

→ FC-120, 256Mb, w/TopSurv TS → Topcon TP-5 Wood Tripod → Single Prism with Sight Pole

Don't forget to add. . .

→ Hand-held Radios, only \$3.20 ea per month → Quick-release Bipod, only \$2.42 per month

→ Back-sight kit, only \$6.93 per month → Schonstedt Locator, only \$13.95 per month

* **Note:** The 'Don't forget to add' prices are calculated based on the 'No money down for 60 months' finance plan. Call us today and we'll design a package just for you!



HAYES
INSTRUMENT CO.

CALL TOLL FREE TODAY

800-251-1280

KAPS Directors Meeting Minutes

Saturday, September 17, 2011, 10:00 AM EST

Kentucky Engineering Center - 160 Democrat Drive, Frankfort, KY 40601

BOARD OF DIRECTORS

CALL TO ORDER

Don Pedigo, KAPS 2011 President, called the September 17, 2011 KAPS Board of Directors Meeting to order at 10:04 AM, EST.

PROXY VOTES

Two proxy votes were reported under deadline: John Schneider assigned his proxy to Don Pedigo on September 6, 2011; Doug Comer assigned his proxy to James Mayo on September 6, 2011. Two proxy votes were received after the deadline: Shaun Foley assigned his proxy to Don Pedigo; Tim Chilton assigned his proxy to Bill Jones. James Riney moved to accept all four proxies. Brian Cox seconded. Motion carried.

Bob Fentress raised the question of how best to handle proxies assigned to the President since the President only votes when there is a tie. Following discussion, Mr. Fentress moved to have the Policy Manual Chair, Tom Bushelman, draft language excluding the President from accepting proxy assignment. Bob Westermeyer seconded. Motion carried.

MEMBERS PRESENT

Don Pedigo – 2011 KAPS President; **James Mayo** – Vice President of External Affairs/Director; **Brian Cox** – Past President; **Bob Fentress** – Secretary/Director; **Bob Westermeyer** – KSPE Liaison; **Ted Niemann** – GIAC Liaison; **James Riney** – Director; **Bill Jones** – Director; **Thomas Clayborn** – Audubon Chapter Chair; **Kevin Phillips** – Bluegrass Capitol Chapter Chair; **Robert Miller** – Green River Chapter Chair; **Johnny Justice** – Highlands Chapter Chair; **Tom Bushelman** – Northern Kentucky Chapter Chair; **Jonathan Payne** – Jackson Purchase Chapter Chair; **Molly Forrest** – Administrative Assistant

MEMBERS ABSENT

John Schneider – Vice President of Internal Affairs/Southeast Chapter Chair; **Doug Comer** – Treasurer/Director; **Chris Gephart** – Director; **Craig Palmer** – NSPS Governor Committee Chair; **Steve Lilly** – Ex-Officio Director; **Shaun Foley** – Barren River Chapter Chair; **Tim Chilton** – Falls of the Ohio Chapter Chair; **Mike Ruggles** – Northeast Chapter Chair

PRESIDENTS WELCOME

President Don Pedigo welcomed everyone.

ADDITIONS OR REVISIONS TO THE AGENDA

President Pedigo had one addition to the agenda: April, 2011 recipients of the PLS and LSIT exam to be discussed under "New Business". There were no other additions or revisions.

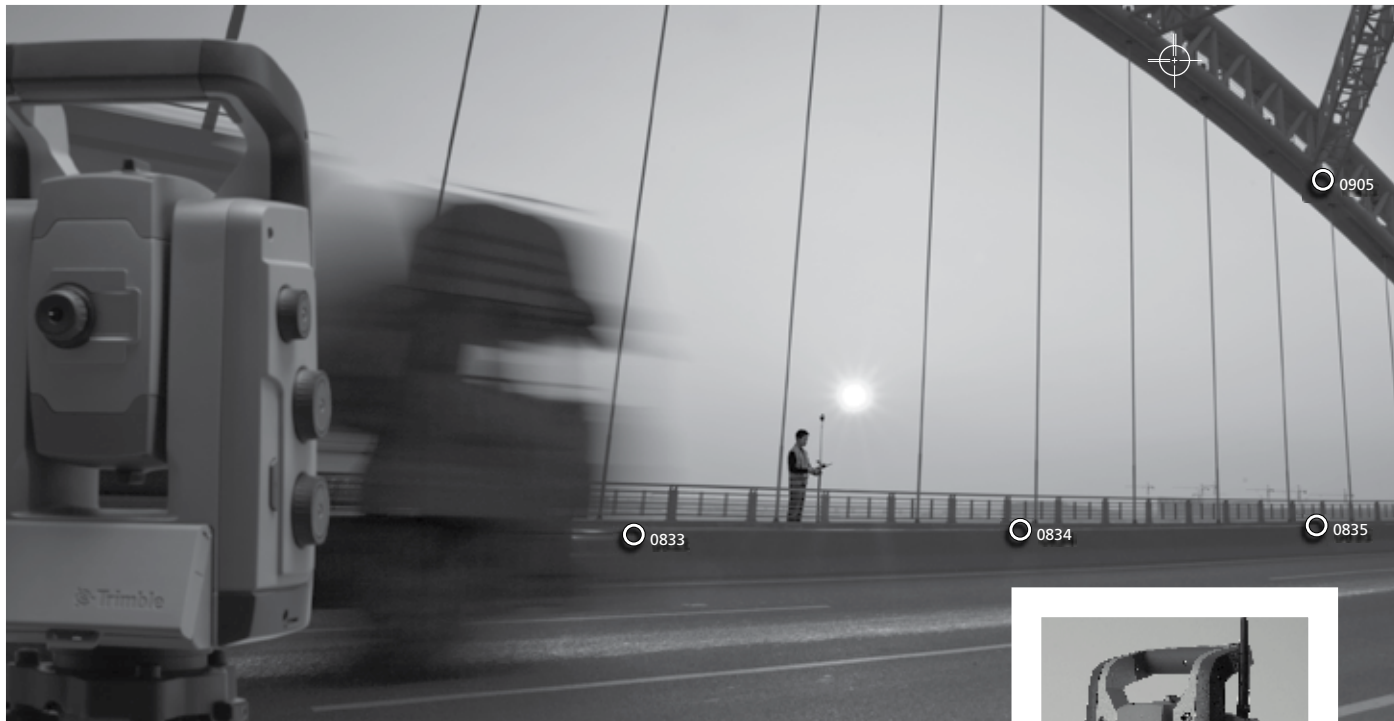
REVIEW AND APPROVAL OF BOARD MEETING MINUTES

The minutes of the June 17, 2011 Board Meeting were reviewed. Bob Fentress made a motion to accept the minutes. Tom Clayborn seconded. Motion carried.

KAPS OFFICER REPORTS

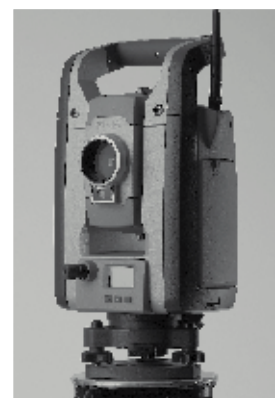
President's Report - President Pedigo directed everyone to the President's Report in their board packet. He reiterated the importance of safety on the job. President Pedigo also urged everyone to fill out the NCEES questionnaire regarding computer based testing.

Treasurer's Report – A Balance Sheet and Profit and Loss Statement were included in the board packet. Upon review, James Riney made a motion to accept the Treasurer's Report. Tom Bushelman seconded. Motion carried.



The shortest distance between two points
is not a trip back to the tripod.

TRIMBLE S8 TOTAL STATION



"Back and forth." Easily two of the most hated words for any surveyor. Except perhaps, "again".

Trimble® VISION™ technology brings new levels of productivity to the Trimble S8 Total Station by dramatically reducing trips back to the tripod. Now you can see everything the instrument sees from your controller.

Why walk back? With the longer range EDM you can stay put and use your controller to aim, acquire, and capture measurements to reflectorless surfaces – at more than twice the distance you're used to.

The Trimble S8 also gives you live video streaming with surveyed data on the screen to confirm your task list. With photo documentation, you have visual verification for all data before leaving the site. Eliminating an even costlier form of back and forth.

Trimble VISION is the latest in a long line of innovations designed to make surveying more productive, in the field, in the office, and wherever the next opportunity takes you.



© 2010, Trimble Navigation Limited. All rights reserved. Trimble and the Globe & Triangle logo is a trademark of Trimble Navigation Limited, registered in the United States and in other countries. Trimble Access is a trademark of Trimble Navigation Limited. All other trademarks are the property of their respective owners. SUR-185

Administrative Assistant's Report – Molly Forrest submitted a report in the board packet. Ms. Forrest reminded Chapter Chairs to take care of the outstanding dues checks made payable to their chapter earlier in the year.

OLD BUSINESS

Fall Seminar Chapter Disbursements

President Pedigo submitted a written proposal regarding disbursement of fall seminar profits (75% to State Association; 15% to ten chapters equally; 10% pro-rated to chapter members). The chapters have not received disbursement for quite some time. Currently, chapters only receive their portion of membership dues. Following discussion, Bob Westermeyer made a motion to approve the proposed disbursement of seminar profits to the chapters and to add the disbursement policy to the Policy Manual. Brian Cox seconded. Motion carried.

NEW BUSINESS

Next KAPS Board Meeting – Saturday, December 10, 2011, 10 AM EST at the Clarion Hotel, 1950 Newtown Pike, Lexington, KY 40511.

Expenses / Mileage Reimbursement Rate

President Pedigo called everyone's attention to the handout in the packet regarding the Commonwealth of Kentucky's Regulation on Travel Expense and Reimbursement. Upon signing KAPS checks, Bob Fentress recently realized the current KAPS rate of \$.28 per mile is outdated. Brian Cox made a motion to accept the current state rate for mileage reimbursement. This policy also needs to be added to the Policy Manual. Bobby Miller seconded. Motion carried.

President Pedigo brought up the issue of Molly Forrest being added as a signer on the KAPS checking account. Although the bank does not require two signers on each check, KAPS does require two signers per check. In addition, a list of checks and deposits is sent to President Pedigo and Doug Comer at least twice a month (Bob Fentress will be added

to that list of recipients). A motion was made by Brian Cox to add Molly Forrest as a check signer. Bob Fentress seconded the motion. Motion carried.

Laptop Purchase – President Pedigo would like to bring KAPS further into the electronic age by adding a laptop for office use. Following discussion, Brian Cox moved to purchase a laptop and software. Bob Westermeyer seconded. Bob Fentress proposed an amendment providing a \$2,000 limit with final approval for purchase by the Executive Committee. Mr. Cox and Mr. Westermeyer accepted amendment. Motion carried.

Proposed Easement Regulation – President Pedigo called attention to the packet insert regarding the Proposed Easement Regulation. The language was put together by the Board of Licensure staff with input from utility companies. Following extensive discussion, Brian Cox made a motion for the KAPS Board to support the Board of Licensure's attempt but to encourage work on the language of the regulation. James Riney seconded. Motion carried. President Pedigo will draft a letter expressing the KAPS Board position.

Recording Plats / Lyon County / Attorney General Letter – President Pedigo reported that a letter was sent to the Lyon County Attorney from the Office of the Attorney General with regard to their obligation to record plats. Jon Payne explained further that the Lyon County Clerk was refusing to record anything other than a major subdivision plat. Other county clerks that have been refusing to record plats were also mentioned. The letter is not a formal declaration but rather an informal reminder of a public official's duty to file any document that is recordable.

KAPS Website update (3 proposals) – President Pedigo directed everyone's attention to three proposals for website maintenance: Code Forte; Mediaura; and Net Tango. Website updates include: on-line renewal of

**FOR MORE
INFORMATION CALL
YOUR TRIMBLE DEALER**

Precision Products
Louisville, KY
502-459-1900

Precision Products
Lexington, KY
859-225-3477



KAPS membership; on-line registration for seminars and annual conference; on-line store; etc. The current manager of the KAPS website cannot take on this large a task at the moment and he suggested Mediaura and Net Tango, both out of Louisville. Their fees were generally from \$8,000 - \$25,000. Code Forte is a company in Frankfort and the quote was \$3,750. President Pedigo emphasized the importance of keeping up in the electronic age and having consistent branding. He is asking for the authority from the board for the Executive Committee to move forward in discussion with Code Forte. Several ideas were discussed for improvement of the site including: state discussion board; map of the state listing members available for surveying work; earning PDH's through the site; archive of *Interior Angle* articles; etc. Tom Clayborn mentioned the possibility of having vendors pay for advertising on the site. Bob Fentress stated his support of the website improvements but reminded the board funds would need to be transferred from reserve to cover the expense. Bob Fentress made a motion for the Executive Committee to move forward with discussion and implementation of the website improvements—not to exceed \$5,000. Tom Bushelman seconded the motion. Motion carried.

LSIT and PLS Recipients – President Pedigo asked everyone to look over the April 2011 list of LSIT and PLS Recipients. He emphasized the importance of chapter chairs contacting those recipients within their chapter. Board of Licensure representatives will be glad to perform an official presentation ceremony in your chapter.

EX-OFFICIO DIRECTORS REPORTS
GIAC Liaison – no written report; Ted Niemann reported the Strategic Planning Committee continues to meet on a regular basis; however, the entire committee has not met recently.

Professional Development Chair – no written report; President Pedigo updated

everyone on the fall seminars. Details will be finalized soon. Instructors include: Jon Payne, Jeff Clark, Frank Willis, Gary Kent, Todd Horton, Marco Rajkovich, Bill Griffin, and several folks from SCORE (re: business growth). A few seminars are pre-approved, however, most of the seminars will need Board of Licensure approval.

CHAPTER REPORTS

Audubon – report submitted in the board packet

Barren River – no written report. President Pedigo mentioned chapter discussions on easement language and seminars.

Bluegrass Capital – no written report. Kevin Phillips reported no meetings throughout the summer. Kevin is looking forward to the seminars in their chapter.

Falls of the Ohio – no written report. Bill Jones reported no meetings throughout the summer. The next chapter meeting is on Tuesday, September 20.

Green River – no written report. Bobby Miller reported regular meetings throughout the summer. President Pedigo attended the August meeting. The meeting was well attended and President Pedigo's attendance was an encouragement.

Highlands – no written report. Johnny Justice reported the chapter met in August and will meet again Tuesday, September 20. A representative from KYDOT will be discussing the new monumentation standards for highway monumentation. They also plan to finalize the plans for their fall seminar.

Northern Kentucky – no written report. Tom Bushelman reported hosting Todd Schufflebarger from Precision Products discussing latest technology. One PDH was given for anyone in attendance. The meeting was well attended. Mr. Bushelman also mentioned the success of their golf

outing. Dan Farrell from the Department of Transportation will be speaking at the chapter's next two meetings. Mr. Bushelman would also like to get Mike Helton to come and speak at one of the next two meetings.

Purchase – report submitted in the board packet. Jonathan Payne wanted to make everyone aware of the content of their upcoming fall seminar: Jeff Clark will be presenting 4 hours on OPUS and Network RTK and Jonathan Payne will present 4 hours on GIS for the Professional Land Surveyors Office.

COMMITTEE REPORTS

Annual Conference – President Pedigo reported progress on planning the 2012 KAPS Conference. The committee has met twice. The Triple L was involved in the last meeting. Possible seminar topics include: Forensic Land Surveying; Water Wars and Riparian Rights; Licensure-Surveyor Awareness; New Technology in Surveying; Case Law; Business; KYTC Surveying; BRS System; Standards of Practice.

Entertainment possibilities are: Carl Hurley (comedian, \$3,000 - \$3,500); Mitch Barrett (folk singer and storyteller); magician; Kentucky Headhunters (musicians, \$7,500 + 3 rooms). Tom Bushelman recommended the Moron Brothers (\$800 - \$850).

President Pedigo expressed his gratitude to the planning committee.

Annual Picnic – President Pedigo reported the golf outing and picnic were a success. The 2012 event will be held at *My Old Kentucky Home* in Bardstown.

By-Laws – no written report. Tom Bushelman reported that the Policy Manual is a dynamic document.

Legislative – report submitted in board packet. James Riney reported that Bob Fentress is in the process of prioritizing the

legislative goals discussed at the chapter forum. Mr. Fentress added that the priorities list would come back to the KAPS Board for modification and approval. Government Strategies is willing to make presentations to the chapters. President Pedigo emphasized the importance of good attendance if a chapter were to invite Government Strategies to present.

Membership – no written report. Bob Westermeyer presented a plan for Chapter Reimbursement for State Membership Dues (included in the board packet). Full compensation will be given to the chapter for each of the **paid** membership classifications January 1 through June 30. Three-fourths compensation will be given to the chapter July 1 through December 31. Compensation will be paid by the KAPS office on a quarterly basis.

Mr. Westermeyer made a motion to approve the submitted plan and to include it in the Policy Manual. Jim Riney seconded the motion. Motion carried.

SPECIAL COMMITTEE REPORT
KY / TN State Line Monuments – report submitted in board packet.

KY BOL Nominations Committee – Bob Westermeyer reported the committee is gathering information on potential nominees. Interviews will be scheduled soon. Four names have been submitted for consideration.

ADJOURNMENT
Bob Fentress made a motion to adjourn. Bill Jones seconded. Motion carried. Meeting adjourned.

Respectfully submitted by
Molly M. Forrest for Bob Fentress, PLS,
Secretary

Edited for content by Doug Comer, Editor.

Andrew C. Kellie, PLS

Department of Industrial & Engineering Technology

Murray State University, Murray KY 42071, akellie@murraystate.edu

FENCES, FENCES

The day started like a lot of days in our firm. Gear was checked, the crews were briefed and the work put in place for the day. Unlike the situation a couple of years ago, all the crews were assigned to boundary retracement at present. Take today, for instance. On West Maple Street we were involved with a boundary retracement incidental to the refinancing of a lot and house in an urban area. In the county, we had a survey for an estate that would go to probate the following week. The jobs were all deceptively simple. They were simple because many of the lines were marked by fences. They were deceptive because many of the lines were marked by fences.

The West Maple Street property was a house lot in a platted subdivision. There were fences on three of the four sides. When we had discussed the job at the office, Tim, who was working as my rodman, saw the job as a purely mechanical one. Run a simple traverse. Make sideshots to locate the corners, the house, and the utilities. The corners should all be marked by fence posts, and the lines should all be marked by fences. End of story, end of survey.

For once, Tim was mostly correct. Three of the four corners of the lot had fence posts next to steel pipes that matched the corner description shown on the plat. Distances and bearings between the pipes checked closely lot dimensions shown on the subdivision plat. The pipe at the fourth corner was missing. We calculated a position and set a new monument from our traverse. When Tim drove the pipe, he had to take care not to hit the fence post. As we left the job, Tim remarked that it was always

comforting to have fences in the family. While there was some truth to what Tim said, I had to think that he had really missed the point. A monument isn't a monument unless called for in the writings. The data shown on the plat of subdivision were what defined the boundaries—and there were no fences shown anywhere on that plat.

Once the survey work for the urban house lot was completed we began on the probate survey in the county. I had met already with the executor and the executor's attorney. The attorney had furnished a copy of the late owner's deed. She took care to point out to me that the title was clear, and she shared her opinion that, "There shouldn't be much of a problem here." The executor, who was from out-of-state, noted that three of the lines were already marked with fences and a fourth line was the road. He couldn't see why it was necessary to survey the property. I explained the difference between title and location, but my client remained resigned and unconvinced.

The land being surveyed was located on the north side of county route 1322. The land was rural, open along the road and timbered at the rear. The land of the adjoiner on the north was plowed and planted. The deed to our client described the east and north lines as section lines. The west line was described by adjoiner. The south line was, of course, country route 1322. The adjoiner, from whom our client purchased, originally had owned part of the northeast ¼ of Section 17. (Kentucky west of the Tennessee River is sectionalized land. While deeds often contain a metes and bounds description, reference to township, range, section number, and proportional part is common.) The northeast corner of the client



ELLERBUSCH

Instrument Company

Leica
Geosystems

SOKKIA

Nikon

Carlson



ELLERBUSCH INSTRUMENT HAS BEEN IN BUSINESS OVER 45 YEARS.
WE NOW OFFER LEICA SURVEYING EQUIPMENT,
& WE ALSO HAVE TRAINING CLASSES AT OUR TRAINING CENTER IN CINCINNATI.

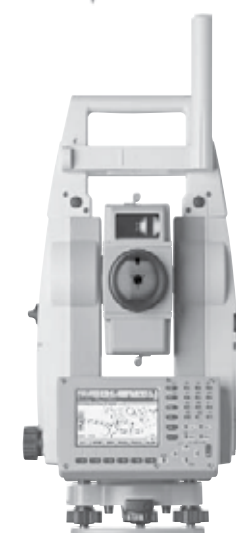
FACTORY AUTHORIZED SERVICE CENTER
TRAINING, SUPPORT, RENTALS, LEASING, & REPAIR SERVICE



LEICA BUILDER / RM TOTAL STATION
REFLECTORLESS EDM MEASUREMENTS.
YOU CAN UPLOAD PLAN DATA
& USE IT IN THE FIELD FOR LAYOUT.



LEICA 1200 GNSS SYSTEM
COMPACT, LIGHTWEIGHT, EXTREMELY RUGGED DUAL
FREQUENCY RECEIVER. INTERNAL: ANTENNA, BATTERY,
BLUETOOTH. CONNECTS TO RADIO/CELL PHONE.
WORKS IN LEICA OR TRIMBLE NETWORK.



LEICA NA2 AUTO LEVEL
THE "CLASSIC". 32X AUTO LEVEL CAN BE USED
FOR CONSTRUCTION AS WELL AS
HIGH ACCURACY SURVEYING.



LEICA TPS1200+ ROBOTIC TOTAL STATION
"THE WORLD'S FASTEST ONE-PERSON
TOTAL STATION!"
LET US PROVE IT TO YOU.
CALL FOR A FREE DEMONSTRATION.



LEICA DNA03 DIGITAL LEVEL
.3mm ACCURACY. MEASURES HEIGHT-
DIFFERENCE-DISTANCE. STORES DATA
ON INTERNAL MEMORY CARD.

VISIT US ON THE WEB www.ellerbusch.com

4509 Vine Street • Cincinnati, Ohio 45217-1652 • Email sales@ellerbusch.com

(513) 641-1800 • Toll Free 800-582-2644 • Fax (513) 641-4360



was the northeast corner of the section. The client and his wife—who predeceased him—had purchased the land in 1957 and had considered it their homestead.

Prior to beginning the field work, we met with each of the adjoining owners. The owner on the east showed us what he thought to be the section line. This was marked throughout its length by pieces of a rusted “Page” wire fence. The original section corner at the northeast corner of the client—a Spanish oak—was gone. There was a steel fence post in an obvious depression in the ground, and that post was generally recognized as the northeast corner of Section 17.

The adjoiner on the north was a very elderly lady who had lived on the land since she was a girl. She hunted up her deed for us, and pointed out to us that she owned to the section line “just like it says here”. She knew about the section corner and said it was her corner “just like it says here.” As to the fence, she claimed that the man who owned to the south previous to our client had put it up when he ran stock there, and, “They put it right on the section line, or at least as close to the line as they could get it, and they even hired some men from town to help.” When I asked if her family had ever kept stock on their place, she was adamant! *Her* family had never kept *cattle*—*her* family farmed cotton and soy beans!

On the west, there were the remains of a rail fence that extended from the county road to a point about 50 feet south of the barbed wire fence. The adjoiner on the west stated that he and our client had put up the rail fence together. Naturally, he wanted to tell me the whole story. According to the gentleman, “I wanted to sell some land and Tom and Sarah said they would buy the east half of what I owned. We hadn’t no money for a survey, so Tom and me just marked the line where we wanted it. Judge Fox drew the deed for us and it was all fixed like we

planned it, and then we built the fence afterwards so we would know where each owned.” In response to another of my questions, he said he had run stock on the place before he sold to our client, and that the fence on the section line was there when he bought the place in 1947. Despite the adjoiner’s statement, the deed to our client made no mention of the land purchased being the east one-half of the grantor.

The survey really wasn’t difficult. It was late November and the leaves were off and we were able to do most of the work with GPS. The remains of the fence on the east line extended north and south as straight as a die for the better part of two sections. We set the client’s southeast corner at the intersection of the section line and the road.

On the north line, we found and located two section and one quarter section corners in addition to the steel fence post in the hollow. We held the steel fence post at the northeast as the corner. The fence post was at the intersection of the east and the north section lines, it was located in what appeared to be the stump hole of a large tree, it was recognized by the adjoiners as the corner, and there was no better evidence of location. The north line, however, we held as the section line. The fence extended no further than the west line of our client’s adjoiner on the west, and it bowed in a large arc a few feet north of the section line.

The west line was based on the remains of the rail fence extended to the section line. We set a corner at that intersection to mark the northwest corner of our client. A similar intersection was used to place a monument at the southwest corner.

As we left the job, Tim remarked that it was always comforting to have fences in the family. While there was some truth to what Tim said, I had to think that he had really missed the point. It was true that was the fence on the west of our client marked the common boundary because at least as far as we could tell, it was evidence of the agreement of two owners as to the

location of a line uncertain by the writings. The adjoining owners appeared to have acquiesced in, and accepted, the location of that fence as their common line for years.

The other fences were not as definitive. The fence on the east section line did witness section line location, but it was the section line that was described as the boundary of record. Neither our client’s deed, nor the deed of his adjoiner on the east mentioned the fence as a monument.

As to the fence on the north, I would have to describe it as a maverick. The fence had been put up to restrain cattle. The location of the section line called for in the writings was clear from other monumentation. It is firmly established that one can only convey land which one owns. Land south of the fence, but north of the section line did not pass in the deed to our client, because our client’s grantor had never owned that land. There was, of course, the question of adverse

possession, a question not to be answered by a surveyor. Still, I thought it over. The fence had been in place a long time. The adjoiner to the north apparently did not object to its location, but she thought that the fence was on the section line and stated that the intent was to put the fence on the line when it was built. In the end, I concluded that if the matter were to be pursued, someone was going to have to sue an 80 year old lady. I couldn’t imagine what that would look like!

So, in the end, how does one summarize fences? In Tim’s words, “It’s always comforting to have fences in the family.” The presence of a fence, however, doesn’t automatically suspend the other principles of boundary law, or for that matter, common sense. As a learned colleague once told me, “There are two functions for a fence. The first is to mark a boundary. The second is to separate one side of the fence from the other.” There would seem to be wisdom in knowing which is operating in a specific boundary retracement.





Danielle Kelly,
Kentucky Height Moderation Coordinator
Kentucky Department of Transportation

OUR TAX DOLLARS AT WORK

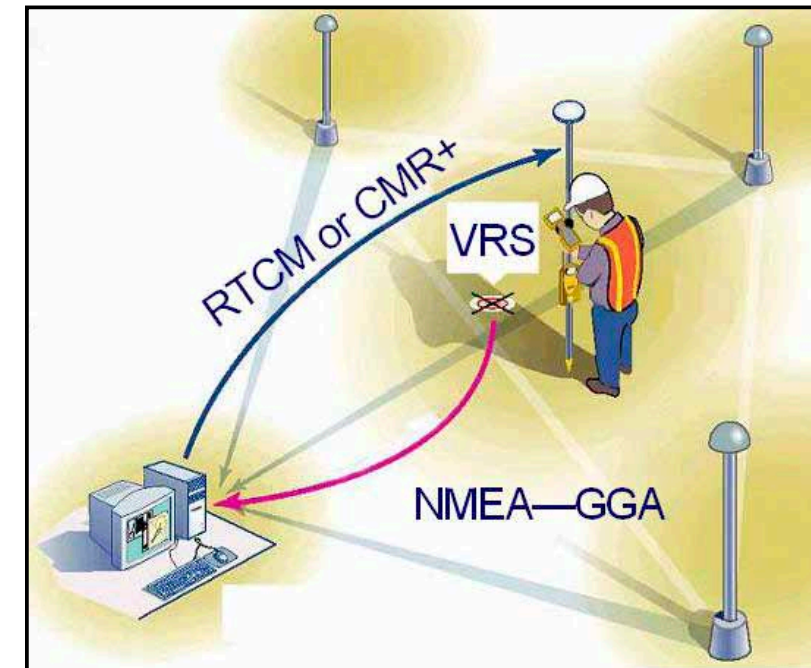
The Kentucky Transportation Cabinet (KYTC) established a network of 15 stations in 2006 and has continued to add stations each year. The Kentucky Continuously Operating Reference System (KYCORS) network, based on Trimble infrastructure products, is a service of continuously operating, fixed reference GPS base stations located throughout Kentucky. GPS/GNSS corrections are delivered real-time via the Internet 24/7. The network now consists of 24 stations and has nearly 400 registered users. Thirteen additional stations just outside of Kentucky's boundaries stream data from neighboring states. The Kentucky Transportation Cabinet has data sharing agreements with Indiana, Tennessee and West Virginia which provide coverage along most of the Kentucky state boundary.

Approximately \$2 million has been invested in building, upgrading and maintaining the network over the past 6 years. KYTC received approximately \$1 million in federal funds through the National Geodetic Survey (NGS) over the course of four years. Those funds were used to purchase equipment and software to start the network and conduct geodetic leveling to each station. KYTC has invested an additional \$1 million in state funds to expand, upgrade and maintain the network. KYTC recognizes the increasing reliance on the KYCORS network by both public and private sectors and is committed to its longevity.

Although primary KYCORS users were predicted to be surveying, engineering and construction companies engaged in highway

design and construction, many other GPS consumers are taking advantage of the network. High-accuracy mobile GIS applications that use GIS or CAD to store, manage, manipulate, and analyze spatial data are taking advantage of the VRS service. Municipal planning departments are using KYCORS to effectively use parcel and boundary mapping data to make more informed decisions. Utilities are migrating to survey grade equipment to accurately collect as-built data and relocate underground infrastructure more efficiently. Water and wastewater utilities are collecting accurate vertical and horizontal data to perform flow analysis in a GIS. The precision agriculture sector use auto-steering systems controlled by RTK guidance for planting, harvesting, spraying, controlled traffic and drip irrigation applications. Free VRS service and extended coverage range reduce investment costs for these guidance systems.

Today's economy has forced private and public sectors to do more on a tight budget with fewer workers. The Kentucky Continuously Operating Reference System is a considerable cost saving tool for those requiring GPS corrections. The KYCORS network provides free, centimeter level RTK data to registered users. The network rover system saves on cost and workload. By eliminating the need to setup and monitor a base station, many jobs can be done by one person instead of two-person crews. In areas where cell signals are strong, there is no longer the need for a radio, antenna, tripods, batteries and cables and a person to guard a base station. Companies that own a base station can convert it to a rover effectively doubling the work that can be completed with minimal additional investment. For those not yet using GPS, the cost of investing



in GPS survey technology is cut in half.

The KYCORS network provides two types of RTK services: Single Baseline and VRS (Virtual Reference Station). Single baseline corrections are used in the same manner as a traditional base setup. Horizontal accuracies in the 2 centimeter range can be expected as long as the user is within 10 kilometers/6 miles of the individual KYCORS station. As the user moves further away from the station, the ionospheric conditions change introducing a baseline error at the rate of approximately one cm per every 10km or one part per million (PPM). This type of solution is limited by location of stations and potential loss of coverage if a station stops working.

The Trimble VRS software enables us to overcome the limitation of location and loss of coverage. The VRS concept is based on having a network of reference stations connected to a control center via the Internet. The software uses real time data from the networked stations to collectively and precisely model ionospheric errors for individual GNSS rovers in the network coverage area. Minimizing ionospheric effects reduces timing errors from the GPS satellites therefore greatly improving measurement

accuracy (no PPM errors).

The rover sends an NMEA format location message to the server and then interprets and uses the VRS network correction data as if it is receiving data from a physical base station on a very short baseline. The baseline dependent error is practically negated because the ionosphere directly over the user is modeled in real time. Many new users sometime mistakenly assume that a virtual vector is created. The baseline vector from the closest reference station is still solved for but with no ionospheric degradation.

Using the VRS or Single Baseline service does not eliminate the need

to maintain proper surveying techniques. Measurement to local control must be performed to ensure your control and coordinates relative to your job site. Users should still check the quality of local control and incoming corrections. It is advisable to check KYCORS corrections at the beginning and end of your survey activities each day.

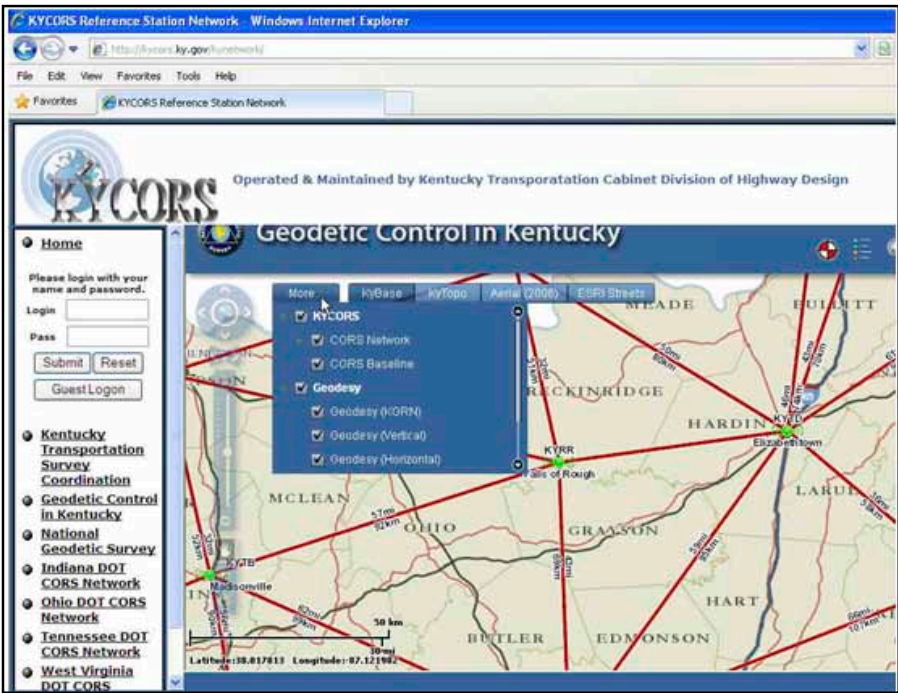
When a field user logs into the KYCORS network, single baseline mount-points or VRS mount-points are listed depending on the broadcast format set up in the user's software. Three VRS broadcast formats (VRSCMRplus, VRSRTCM3 and VRSRTCM2.3) and two single baseline formats (CMR+ and RTCM3) are provided. Single baseline mount-points are indicated by site code and city. For example, the Lexington station is listed as KYTG for CMR+, K_G for RTCM3. All major geodetic receiver manufacturers support these formats.

Access to the KYCORS network via NTRIP protocol requires the connecting software be configured with a registered user ID, password, server IP (159.19.10.28) and port (2101). A new user simply needs to register at <http://kycors.ky.gov> to acquire log in credentials. The KYCORS website offers registered users a variety of information about the network. The

newest addition to the site is the incorporation of the Kentucky Geodetic Control map service. Users can turn on layers under the *More...* button to view CORS Baselines and information on horizontal and vertical control located throughout the state.

Another link frequently visited, is the KYCORS RINEX Shop service which archives correction data for 30 days and makes it available online to subscribers for post processing. The data is available in RINEX format in a variety of file sizes and logging rates. Data is logged at one-second intervals, and users can access the data at logging intervals from one second up to one minute and specify a date and time period within the past 30 days. The RINEX Shop provides an alternative to RTK data when real time field corrections are not feasible.

The Kentucky Transportation Cabinet, Division of Highway Design is responsible



for administering and maintaining the KYCORS network. The goal of KYTC is to provide 24/7 network service but due to unforeseen technical issues, this is not always possible – a caveat of a free service. User support for connection and data quality issues is provided by yours truly. You may contact me by email at Danielle.kelly@ky.gov or by phone at 859-421-6698.

SURVEY DRAFTSMAN POSITION

Qualifications:

Proficiency with AutoCad and Land Development Desktop.
The successful candidate will produce plats of subdivision, plats of survey, topographic surveys, ALTA surveys, and boundary surveys.

The Survey Draftsman is responsible for follow through and quality completion of all assigned tasks with the following essential qualifications:
Strong knowledge and expertise with AutoCad and Land Development Desktop
Minimum 2 years experience
Strong math and geometry skills
Ability to work on multiple projects simultaneously
Drafting skills adequate to upload survey measurements into a computer system and create drawings and maps using AutoCad
Prepare data, plots, maps, charts, records and documents related to surveys
Search archives for survey and construction design and as-built records as may be relevant in ongoing projects
Assist in the preparation of descriptive narratives and tables on surveys to be used in project scopes of work and bid documents on construction and land projects
Perform relevant and related tasks as may be directed
Update drawings as needed and assist maintaining of process flow diagrams (PFD) and process instrumentation diagrams (PID)

For more information contact: Melody Allen, Office Manager, Brad Armstrong Land Surveying, Inc.
502-543-4607 - himelody@aol.com

The MEASURE OF EXCELLENCE

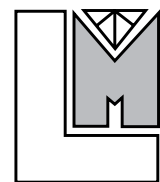


EASY ORDERING ONLINE!

SURV-KAP.com

SURVEY MARKERS, CAPS AND ACCESSORIES • 800-445-5320





LANDMARK ENGINEERING, INC.
Professional Engineering & Land Surveying

183 St. Charles Street
Bowling Green, KY 42101

Office: 270-842-0812
Fax: 270-842-0910



- SURVEYING
- CIVIL ENGINEERING
- GEOTECHNICAL ENGINEERING
- MATERIALS TESTING & INSPECTION
- LANDSCAPE ARCHITECTURE
- GLOBAL POSITIONING SURVEYS
- CONSTRUCTION LAYOUT
- CONSTRUCTION OBSERVATION

606-573-4300
606-573-6722

Fax: 606-573-6722
E-mail: lmainc@kih.net

Leo Miller, PE, PLS
President

Leo Miller & Associates, Inc.
Professional Engineering and Land Surveying

114 N. Second Street
P.O. Box 488
Harlan, Kentucky 40831



Kentucky North Carolina South Carolina Tennessee
(800) 388-6660

www.VaughnMelton.com

Your Project... Our Promise



www.yourprecision.com

**Serving All of Kentucky With
3 Convenient Locations!**



Central Kentucky:
LOUISVILLE (502) 459-1900

Eastern Kentucky:
LEXINGTON (859) 225-3477

Western Kentucky:
EVANSVILLE, IN (812) 434-9900

**We Are A Proud
Supporter of KAPS!!!**

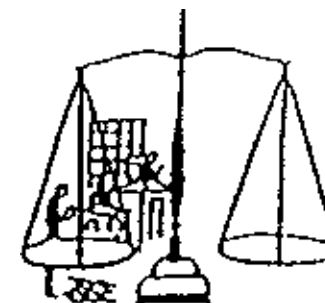


416 W. THIRD ST. P.O. BOX 535
OWENSBORO, KENTUCKY 42302
PHONE 270-683-7558 FAX 270-683-9277

PROFESSIONAL LIABILITY INSURANCE

- Engineers & Architects -
- Landscape Architects -
- Land Surveyors -

Toll Free: (800) 762-5851
(859) 231-7060
Fax: (859) 231-7069



W.B. GRIFFIN & SON INSURANCE
127 Cheapside (Next to Fayette County Courthouse)
Lexington, Kentucky 40507-1303

**A&L SURVEYING AND
ENGINEERING, LLC** | **DAVID
ALTIZER,
P.E., P.L.S.**

380 BARBOURVILLE RD. 606-864-6648
LONDON, KY 40744 1-800-929-6648
alsurveying@yahoo.com FAX 606-864-3572

Engineers - Surveyors
Land Planners
Construction Managers



4357 Harrison Avenue, Cincinnati, Ohio 45211
(513) 721-5500 Fax: (513) 721-0607

4780 Industry Drive, Suite 1, Fairfield, Ohio 45014
(513) 829-2090 Fax: (513) 829-2175

**Abercrombie
& Associates, Inc.**
Civil Engineers/Surveyors
www.abercrombie-associates.com

Colerain Professional Center, Suite 120
3377 Compton Road Phone: (513) 385-5757
Cincinnati, Ohio 45251-2507 Fax (513) 245-5161

Zaenkert
Surveying Essentials
Bob Zaenkert
President

7461-A Cincinnati-Brookville Rd. 1-800-262-4992
Okeana, OH 45053 513-738-2917
zaenkert@aol.com Fax 513-738-5817

Garten Professional Surveying, LLC
124 Glen Creek Drive - PO Box 845 - Georgetown, KY 40324-8845

Land Surveying - Construction Staking - Topographical Surveys
Civil Construction Estimating and Administrative Services

Rudy Garten, PLS rudygarten@GPS-LLC.com
Registered in Kentucky since 1978
Licensed and Insured
Member: KAPS, NSPS/ACSM, NSPE/KSPE, Lifetime UK Alumni, Chamber of Commerce

Phone 502 570-0849 Mobile 859 229-6145
Fax 502 570-0853 Toll Free 888 571-0849

www.GPS-LLC.com



WITH THE DIGITAL AGE UPON US, PLEASE PROVIDE AT LEAST ONE VALID EMAIL ADDRESS!
SEVERAL CHAPTERS COMMUNICATE EXCLUSIVELY VIA EMAIL.

Kentucky Association of Professional Surveyors

MEMBERSHIP APPLICATION

NAME _____ SPOUSE _____

CHAPTER _____ KY P.L.S. NO. _____ LSIT NO. _____

PLEASE PLACE X TO INDICATE PREFERRED ADDRESS FOR ASSOCIATION MAILING

() RESIDENCE ADDRESS

CITY _____ STATE _____ ZIP _____

PHONE () _____ E-MAIL _____

() BUSINESS NAME

PHONE () _____

ADDRESS _____ FAX () _____

CITY _____ MOBILE () _____

STATE _____ ZIP _____ E-MAIL _____

BIRTHDAY _____ WEBSITE _____

EDUCATION (YRS COMPLETED) HIGH SCHOOL _____ COLLEGE _____

HIGHEST DEGREE _____

I HEREBY CERTIFY THAT THE STATEMENTS MADE ON THIS APPLICATION ARE CORRECT AND THAT IF
ELECTED I AGREE TO BE BOUND BY THE CONSTITUTION AND BY-LAWS OF THE ASSOCIATION.

SIGNATURE _____ DATE _____

CLASSIFICATION OF MEMBERSHIP

() AFFILIATE MEMBER	\$87.50
() ASSOCIATE MEMBER	\$87.50
() COMPATRIOT MEMBER	\$87.50
() CORPORATE MEMBER	\$240.00
() FULL MEMBER	\$175.00
() HONORARY MEMBER	\$0.00
() LIFE MEMBER	\$0.00
() STUDENT MEMBER	\$0.00
() SUSTAINING MEMBER	\$87.50

MEMBERSHIP FEE INCLUDES CHAPTER DUES

M.C./VISA # _____

Security "V" Code (Last 3 digits on back of card): _____

Expiration Date _____

Signature _____

Referred by: _____

PRORATION OF DUES

(for New Members only)

Date of Application	Amount
January 1 through June 10	100% of Annual Dues
July 1 through December 31	75% of Annual Dues

MAIL TO :
KAPS
124 WALNUT STREET
FRANKFORT, KY 40601

